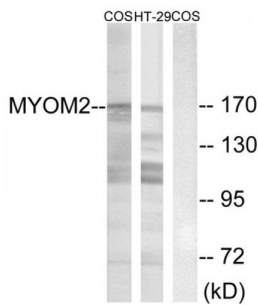


Myomesin 2 (MYOM2) Antibody

Catalogue No.: abx014613



Western blot analysis of extracts from COS-7 cells and HT-29 cells, using MYOM2 antibody.

Rabbit polyclonal antibody against MYOM2 protein. Immunogen region is Internal.

Target:	Myomesin 2 (MYOM2)
Clonality:	Polyclonal
Reactivity:	Human, Mouse
Tested Applications:	ELISA, WB
Host:	Rabbit
Recommended dilutions:	WB: 1/500 - 1/3000, ELISA: 1/40000. Optimal dilutions/concentrations should be determined by the end user.
Conjugation:	Unconjugated
Immunogen:	The antiserum was produced against synthesized peptide derived from internal of human MYOM2.
Isotype:	IgG
Form:	Liquid
Purification:	Purified from rabbit antiserum by affinity chromatography using epitope-specific immunogen.
Storage:	Aliquot and store at -20°C. Avoid repeated freeze/thaw cycles.
UniProt Primary AC:	P54296 (UniProt , ExPASy)
KEGG:	hsa:9172
String:	9606.ENSP00000262113

Datasheet

Version: 2.0.0

Revision date: 29 Aug 2024



Buffer: PBS (without Mg^{2+} and Ca^{2+}), pH 7.4, 150 mM NaCl, 0.02% sodium azide, 50% glycerol.

Concentration: 1 mg/ml

Note: This product is for research use only.

For Reference Only