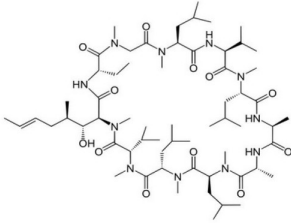
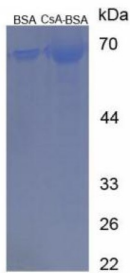


Cyclosporin A (CsA) Peptide (BSA)

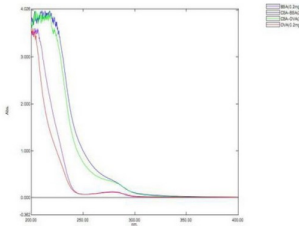
Catalogue No.: abx165696



Structure of unconjugated Cyclosporin A.



SDS-PAGE analysis of Cyclosporin A (BSA).



UV/Vis spectrum of Cyclosporin A (BSA).

Cyclosporin A Protein is a General protein.

Target: Cyclosporin A (CsA)

Origin: General

Expression: Synthetic

Tested Applications: WB, SDS-PAGE

Conjugation: BSA

Form: Lyophilized

Purity: > 90%

Datasheet

Version: 2.0.0

Revision date: 13 Mar 2025



- Reconstitution:** To keep the original salt concentration, we recommend reconstituting to the original concentration prior to lyophilization (see Concentration) in ddH₂O. If a lower concentration is required, dilute in 10 mM PBS, pH 7.4. If a higher concentration is required, the product can be reconstituted directly in 10 mM PBS, pH 7.4, though please note that this will change the overall salt concentration. The stock concentration should be between 0.1-1.0 mg/ml. Do not vortex.
- Storage:** Store at 2-8 °C for up to one month. Store at -80 °C for up to one year. Avoid repeated freeze/thaw cycles.
- Molecular Weight:** Unconjugated MW: 1202.6 Da
- Sequence Fragment:** Refer to structure.
- Buffer:** Prior to lyophilization: 10 mM PBS, pH 7.4.
- Activity:** Not tested
- Concentration:** Prior to lyophilization: 2 mg/ml
- Note:** THIS PRODUCT IS FOR RESEARCH USE ONLY. NOT FOR USE IN DIAGNOSTIC, THERAPEUTIC OR COSMETIC PROCEDURES. NOT FOR HUMAN OR ANIMAL CONSUMPTION.

For Reference Only