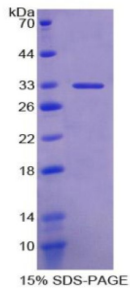


Human Ectonucleoside Triphosphate Diphosphohydrolase 1 (ENTPD1) Protein

Catalogue No.: abx166563



SDS-PAGE analysis of ENTPD1 Protein.

ENTPD1 Protein is a recombinant Human protein expressed in *E. coli*.

Target: Ectonucleoside Triphosphate Diphosphohydrolase 1 (ENTPD1)

Origin: Human

Expression: Recombinant

Tested Applications: WB, SDS-PAGE

Host: *E. coli*

Conjugation: Unconjugated

Form: Lyophilized

Purity: > 95%

Reconstitution: To keep the original salt concentration, we recommend reconstituting to the original concentration prior to lyophilization (see Concentration) in ddH₂O. If a lower concentration is required, dilute in PBS, pH 7.4. If a higher concentration is required, the product can be reconstituted directly in PBS, pH 7.4, though please note that this will change the overall salt concentration. The stock concentration should be between 0.1-1.0 mg/ml. Do not vortex.

Storage: Store at 2-8 °C for up to one month. Store at -80 °C for up to one year. Avoid repeated freeze/thaw cycles.

UniProt Primary AC: P49961 ([UniProt](#), [ExPASy](#))

KEGG: hsa:953

Datasheet

Version: 1.0.0

Revision date: 23 Feb 2025



String: [9606.ENSF00000360250](#)

Molecular Weight: Calculated MW: 32.2 kDa

Sequence Fragment: Leu241-Leu486

Tag: N-terminal His tag

Buffer: Prior to lyophilization: PBS, pH 7.4, containing 0.01% Sarcosyl, 1 mM DTT, 5% Trehalose and Proclin-300.

Activity: Not tested

Concentration: Prior to lyophilization: 200 µg/ml

Note: This product is for research use only.
Not for human consumption, cosmetic, therapeutic or diagnostic use.

For Reference Only