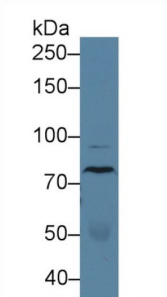
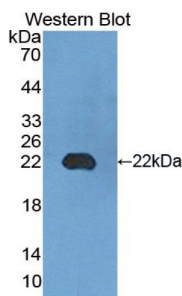


EGF Like Module Containing Mucin Like Hormone Receptor 2 (EMR2) Antibody

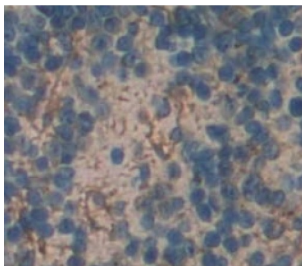
Catalogue No.: abx128952



Western blot analysis of Human Serum, using Human EMR2 Antibody (2 µg/ml) and HRP-conjugated Goat Anti-Rabbit antibody (abx400043, 0.2 µg/ml).



Western blot analysis of the recombinant protein.



IHC-P analysis of Kidney tissue, with DAB staining.

EGF Like Module Containing Mucin Like Hormone Receptor 2 Antibody is a Rabbit Polyclonal against EGF Like Module Containing Mucin Like Hormone Receptor 2.

Target: EGF Like Module Containing Mucin Like Hormone Receptor 2 (EMR2)

Clonality: Polyclonal

Reactivity: Human

Tested Applications: WB, IHC, IF/ICC

Host: Rabbit

Recommended dilutions: WB: 0.01-2 µg/ml, IHC: 5-20 µg/ml, IF/ICC: 5-20 µg/ml. Optimal dilutions/concentrations should be determined by the end user.

Datasheet

Version: 2.0.0
Revision date: 11 Feb 2025



Conjugation:	Unconjugated
Immunogen:	EMR2 (Asn347-Ser509)
Form:	Liquid
Purification:	Purified by antigen-specific affinity chromatography, followed by Protein A affinity chromatography.
Storage:	Aliquot and store at -20°C. Avoid repeated freeze/thaw cycles.
Buffer:	0.01 M PBS, pH 7.4, containing 0.05% Proclin-300, 50% glycerol.
Note:	This product is for research use only.

For Reference Only