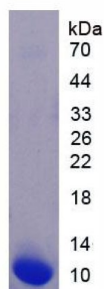
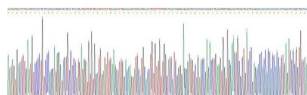


## Human Epidermal Growth Factor (EGF) Protein

Catalogue No.: abx168040



SDS-PAGE analysis of recombinant Epidermal Growth Factor Protein.



Gene sequencing extract of recombinant Epidermal Growth Factor Protein.

Epidermal Growth Factor Protein is a recombinant Human protein expressed in *E. coli*.

**Target:** Epidermal Growth Factor (EGF)

**Origin:** Human

**Expression:** Recombinant

**Tested Applications:** WB, SDS-PAGE

**Host:** *E. coli*

**Conjugation:** Unconjugated

**Form:** Lyophilized

**Purity:** > 90%

**Reconstitution:** Reconstitute in ddH<sub>2</sub>O to a concentration of 0.1-0.25 mg/ml. Do not vortex.

**Storage:** Store at 2-8 °C for up to one month. Store at -80 °C for up to one year. Avoid repeated freeze/thaw cycles.

**UniProt Primary AC:** P01133 ([UniProt](#), [ExPASy](#))

# Datasheet

Version: 5.0.0

Revision date: 26 Apr 2025



**Molecular Weight:** Calculated MW: 9.9 kDa  
Observed MW (SDS-PAGE): 10 kDa

**Sequence Fragment:** Asn971-Arg1023

**Sequence:** NSDSECPLSH DGYCLHDGVC MYIEALDKYA CNCVVG YIGE RCQYRDLKWW ELR

**Tag:** N-terminal His tag

**Buffer:** Prior to lyophilization: PBS, pH 7.4, containing 0.01% Sarcosyl, 5% Trehalose.

**Activity:** Not tested

**Concentration:** Prior to lyophilization: 400 µg/ml

**Note:** THIS PRODUCT IS FOR RESEARCH USE ONLY. NOT FOR USE IN DIAGNOSTIC, THERAPEUTIC OR COSMETIC PROCEDURES. NOT FOR HUMAN OR ANIMAL CONSUMPTION.

For Reference Only