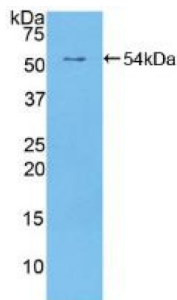


Datasheet

Version: 2.0.0
Revision date: 04 Dec 2024

Receptor Tyrosine-Protein Kinase ErbB-2 (ERBB2) Antibody

Catalogue No.: abx128593



Western blot analysis of recombinant Human EGFR2.

Receptor Tyrosine-Protein Kinase ErbB-2 (ERBB2) Antibody is a Rabbit Polyclonal against Receptor Tyrosine-Protein Kinase ErbB-2 (ERBB2).

Target:	Receptor Tyrosine-Protein Kinase ErbB-2 (ERBB2)
Clonality:	Polyclonal
Reactivity:	Human
Tested Applications:	WB, IHC, IF/ICC
Host:	Rabbit
Recommended dilutions:	WB: 0.5-2 µg/ml, IHC: 5-20 µg/ml, IF/ICC: 5-20 µg/ml. Optimal dilutions/concentrations should be determined by the end user.
Conjugation:	Unconjugated
Immunogen:	EGFR2 (Phe376-Gly578)
Form:	Liquid
Purification:	Purified by antigen-specific affinity chromatography, followed by Protein A affinity chromatography.
Storage:	Aliquot and store at -20°C. Avoid repeated freeze/thaw cycles.
UniProt Primary AC:	P04626 (UniProt , ExPASy)
KEGG:	hsa:2064
String:	9606.ENSP00000269571

Datasheet

Version: 2.0.0

Revision date: 04 Dec 2024



Buffer: 0.01 M PBS, pH 7.4, containing 0.05% Proclin-300, 50% glycerol.

Note: This product is for research use only.

For Reference Only