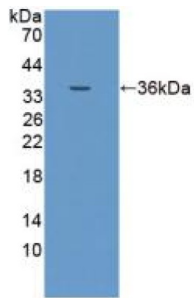
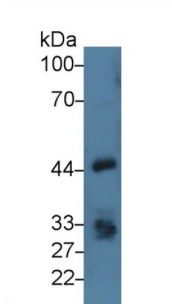


Epithelial Cell Adhesion Molecule (EPCAM) Antibody

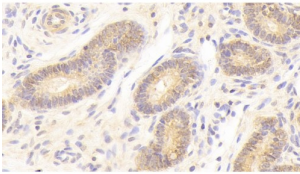
Catalogue No.: abx129957



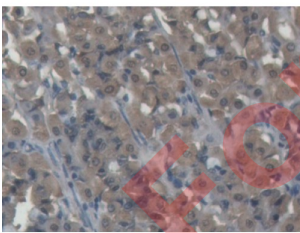
Western blot analysis of recombinant Pig EPCAM.



Western blot analysis of Pig Kidney Lysate, using Rabbit Anti-Pig EPCAM antibody (3 µg/ml) and HRP-conjugated Goat Anti-Rabbit antibody ([abx400043](#), 0.2 µg/ml).



IHC-P analysis of Pig Uterus Tissue, with DAB staining, using Rabbit Anti-Pig EPCAM antibody (10 µg/ml) and HRP-conjugated Goat Anti-Rabbit antibody ([abx400043](#), 2 µg/ml).



IHC-P analysis of Pig Stomach Tissue, with DAB staining.

Epithelial Cell Adhesion Molecule (EPCAM) Antibody is a Rabbit Polyclonal against Epithelial Cell Adhesion Molecule (EPCAM).

Target: Epithelial Cell Adhesion Molecule (EPCAM)

Clonality: Polyclonal

Reactivity: Pig

Datasheet

Version: 3.0.0
Revision date: 04 Dec 2024



Tested Applications:	WB, IHC, IF/ICC
Host:	Rabbit
Recommended dilutions:	WB: 0.5-3 µg/ml, IHC: 5-30 µg/ml, IF/ICC: 5-30 µg/ml. Optimal dilutions/concentrations should be determined by the end user.
Conjugation:	Unconjugated
Immunogen:	abx167541 - Recombinant EPCAM (Gln25-Gln265 linked with LEHHHHHH) expressed in E. coli
Form:	Liquid
Purification:	Purified by antigen-specific affinity chromatography, followed by Protein A affinity chromatography.
Storage:	Aliquot and store at -20°C. Avoid repeated freeze/thaw cycles.
Buffer:	0.01 M PBS, pH 7.4, containing 0.05% Proclin-300, 50% glycerol.
Concentration:	0.76 mg/ml
Note:	This product is for research use only.

For Reference Only