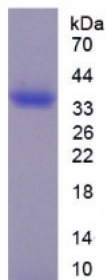


Chicken Epithelial Cell Adhesion Molecule (EPCAM) Protein

Catalogue No.: abx168032



SDS-PAGE analysis of Epithelial Cell Adhesion Molecule Protein.

Epithelial Cell Adhesion Molecule (EPCAM) Protein is a recombinant Chicken protein expressed in *E. coli*.

Target:	Epithelial Cell Adhesion Molecule (EPCAM)
Origin:	Chicken
Expression:	Recombinant
Tested Applications:	WB, SDS-PAGE
Host:	<i>E. coli</i>
Conjugation:	Unconjugated
Form:	Lyophilized
Purity:	> 97%
Reconstitution:	To keep the original salt concentration, we recommend reconstituting to the original concentration prior to lyophilization (see Concentration) in ddH ₂ O. If a lower concentration is required, dilute in 20 mM Tris, 150 mM NaCl, pH 8.0. If a higher concentration is required, the product can be reconstituted directly in 20 mM Tris, 150 mM NaCl, pH 8.0, though please note that this will change the overall salt concentration. The stock concentration should be between 0.1-1.0 mg/ml. Do not vortex.
Storage:	Store at 2-8 °C for up to one month. Store at -80 °C for up to one year. Avoid repeated freeze/thaw cycles.
Molecular Weight:	Calculated MW: 32.1 kDa Observed MW (SDS-PAGE): 36 kDa
Sequence Fragment:	Asp21-Gly260 linked with LEHHHHHH
Tag:	N-terminal His tag

Datasheet

Version: 3.0.0

Revision date: 29 Mar 2025



Buffer: Prior to lyophilization: 20 mM Tris, 150 mM NaCl, pH 8.0, containing 1 mM EDTA, 1 mM DTT, 0.01% Sarcosyl, 5% Trehalose and Proclin-300.

Activity: Not tested

Concentration: Prior to lyophilization: 200 µg/ml

Note: THIS PRODUCT IS FOR RESEARCH USE ONLY. NOT FOR USE IN DIAGNOSTIC, THERAPEUTIC OR COSMETIC PROCEDURES. NOT FOR HUMAN OR ANIMAL CONSUMPTION.

For Reference Only