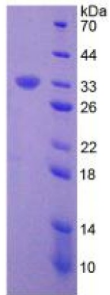
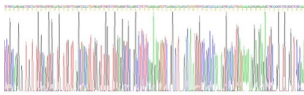


## Human Estrogen Receptor Alpha (ESR1) Protein

Catalogue No.: abx167107



SDS-PAGE analysis of recombinant Human Estrogen Receptor alpha Protein.



Gene sequencing extract of recombinant Human Estrogen Receptor alpha Protein.

Human Estrogen Receptor Alpha Protein is a recombinant Human protein expressed in *E. coli*.

**Target:** Estrogen Receptor Alpha (ESR1)

**Origin:** Human

**Expression:** Recombinant

**Tested Applications:** WB, SDS-PAGE

**Host:** *E. coli*

**Conjugation:** Unconjugated

**Form:** Lyophilized

**Purity:** > 97%

**Reconstitution:** To keep the original salt concentration, we recommend reconstituting to the original concentration prior to lyophilization (see Concentration) in ddH<sub>2</sub>O. If a lower concentration is required, dilute in 10 mM PBS, pH 7.4. If a higher concentration is required, the product can be reconstituted directly in 10 mM PBS, pH 7.4, though please note that this will change the overall salt concentration. The stock concentration should be between 0.1-1.0 mg/ml. Do not vortex.

# Datasheet

Version: 5.0.0  
Revision date: 08 Dec 2024



**Storage:** Store at 2-8 °C for up to one month. Store at -80 °C for up to one year. Avoid repeated freeze/thaw cycles.

**UniProt Primary AC:** P03372 ([UniProt](#), [ExPASy](#))

**Gene Symbol:** ESR1

**KEGG:** hsa:2099

**String:** [9606.ENSP00000405330](#)

**Molecular Weight:** Calculated MW: 33.4 kDa  
Observed MW (SDS-PAGE): 33 kDa

**Sequence Fragment:** Ser178-Met438

**Sequence:** SAK ETRYCAVCND YASGYHYGVW SCEGCKAFFK RSIQGHNDYM CPATNQCTID KNRRKSCQAC  
RLRKC  
YEVGM MKGGIRKDRR GGRMLKHKRQ RDDGEGRGEV GSAGDMRAAN LWPSPLMIKR  
SKKNSLALS LAD  
QMVSALL DAEPPILYSE YDPTRPFSEA SMMGLLTNLA DRELVHMINW AKRVPGFVDL  
TLHDQVHLLC  
AWLEILMIG LVWRSMHEPG KLLFAPNLLL DRNQGKCV EG MVEIFDMLLA TSSRFRMM

**Tag:** N-terminal His tag

**Buffer:** Prior to lyophilization: PBS, pH 7.4, containing 0.01% Sarcosyl, 5% Trehalose.

**Activity:** Not tested

**Concentration:** Prior to lyophilization: 250 µg/ml

**Note:** This product is for research use only.  
Not for human consumption, cosmetic, therapeutic or diagnostic use.