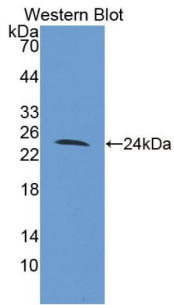
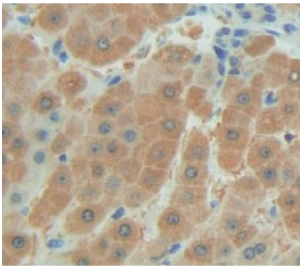


Family With Sequence Similarity 20, Member A (FAM20A) Antibody

Catalogue No.: abx129208



Western blot analysis of the recombinant protein.



IHC-P analysis of Human Tissue, with DAB staining.

Family With Sequence Similarity 20, Member A Antibody is a Rabbit Polyclonal against Family With Sequence Similarity 20, Member A.

Target:	Family With Sequence Similarity 20, Member A (FAM20A)
Clonality:	Polyclonal
Reactivity:	Human
Tested Applications:	WB, IHC, IF/ICC
Host:	Rabbit
Recommended dilutions:	WB: 0.01-2 µg/ml, IHC: 5-20 µg/ml, IF/ICC: 5-20 µg/ml. Optimal dilutions/concentrations should be determined by the end user.
Conjugation:	Unconjugated
Immunogen:	FAM20A (Lys368-Ser541)
Form:	Liquid
Purification:	Purified by antigen-specific affinity chromatography, followed by Protein A affinity chromatography.

Datasheet

Version: 2.0.0
Revision date: 27 Mar 2025



Storage: Aliquot and store at -20°C. Avoid repeated freeze/thaw cycles.

UniProt Primary AC: Q96MK3 ([UniProt](#), [ExPASy](#))

KEGG: hsa:54757

String: [9606.ENSP00000468308](#)

Buffer: 0.01 M PBS, pH 7.4, containing 0.05% Proclin-300, 50% glycerol.

Note: THIS PRODUCT IS FOR RESEARCH USE ONLY. NOT FOR USE IN DIAGNOSTIC, THERAPEUTIC OR COSMETIC PROCEDURES. NOT FOR HUMAN OR ANIMAL CONSUMPTION.

For Reference Only