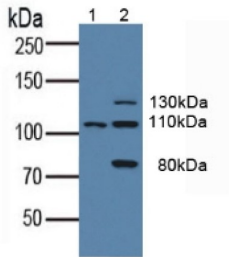
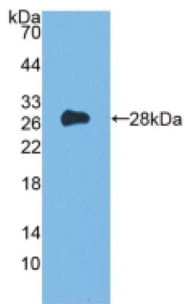


Receptor-type tyrosine-protein kinase FLT3 (FLT3) Antibody

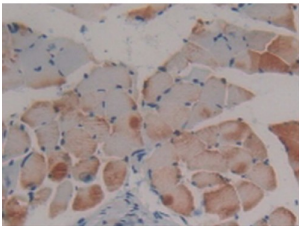
Catalogue No.: abx129609



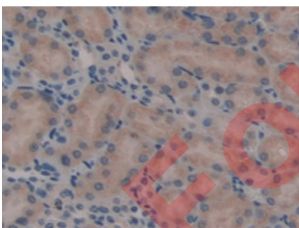
Western blot analysis of (1) Human K562 Cells and (2) Human HepG2 Cells.



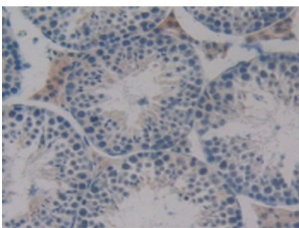
Western blot analysis of recombinant Mouse Flt3.



IHC-P analysis of Mouse Skeletal Muscle Tissue, with DAB staining.



IHC-P analysis of Mouse Kidney Tissue, with DAB staining.



IHC-P analysis of Mouse Testis Tissue, with DAB staining.

Datasheet

Version: 1.0.0
Revision date: 11 Mar 2025



FMS Like Tyrosine Kinase 3 Antibody is a Rabbit Polyclonal against FMS Like Tyrosine Kinase 3.

Target:	Receptor-type tyrosine-protein kinase FLT3 (FLT3)
Clonality:	Polyclonal
Reactivity:	Mouse
Tested Applications:	WB, IHC, IF/ICC
Host:	Rabbit
Recommended dilutions:	WB: 0.01-5 µg/ml, IHC: 5-20 µg/ml, IF/ICC: 5-20 µg/ml. Optimal dilutions/concentrations should be determined by the end user.
Conjugation:	Unconjugated
Immunogen:	Flt3 (Lys335-Ser544)
Form:	Liquid
Purification:	Purified by antigen-specific affinity chromatography, followed by Protein A affinity chromatography.
Storage:	Aliquot and store at -20°C. Avoid repeated freeze/thaw cycles.
Buffer:	0.01 M PBS, pH 7.4, containing 0.05% Proclin-300, 50% glycerol.
Note:	THIS PRODUCT IS FOR RESEARCH USE ONLY. NOT FOR USE IN DIAGNOSTIC, THERAPEUTIC OR COSMETIC PROCEDURES. NOT FOR HUMAN OR ANIMAL CONSUMPTION.

For Reference Only