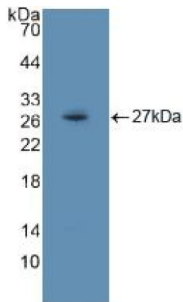
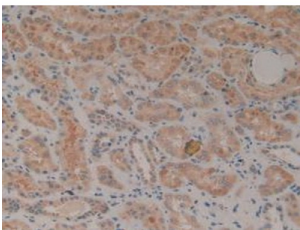


## Receptor-type tyrosine-protein kinase FLT3 (FLT3) Antibody

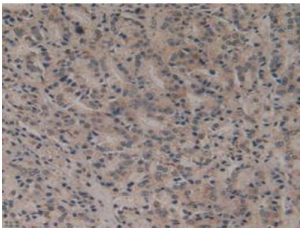
Catalogue No.: abx128669



Western blot analysis of recombinant Human Flt3.



IHC-P analysis of Human Kidney Tissue, with DAB staining.



IHC-P analysis of Human Prostate Gland Cancer Tissue, with DAB staining.

FMS Like Tyrosine Kinase 3 Antibody is a Rabbit Polyclonal against FMS Like Tyrosine Kinase 3.

**Target:** Receptor-type tyrosine-protein kinase FLT3 (FLT3)

**Clonality:** Polyclonal

**Reactivity:** Human

**Tested Applications:** WB, IHC, IF/ICC

**Host:** Rabbit

**Recommended dilutions:** WB: 1-5 µg/ml, IHC: 5-20 µg/ml, IF/ICC: 5-20 µg/ml. Optimal dilutions/concentrations should be determined by the end user.

**Conjugation:** Unconjugated

# Datasheet

Version: 1.0.0  
Revision date: 22 Dec 2024



<b>Immunogen:</b>	Flt3 (Lys334-Ser543)
<b>Form:</b>	Liquid
<b>Purification:</b>	Purified by antigen-specific affinity chromatography, followed by Protein A affinity chromatography.
<b>Storage:</b>	Aliquot and store at -20°C. Avoid repeated freeze/thaw cycles.
<b>UniProt Primary AC:</b>	P36888 ( <a href="#">UniProt</a> , <a href="#">ExPASy</a> )
<b>KEGG:</b>	hsa:2322
<b>String:</b>	<a href="#">9606.ENSP00000241453</a>
<b>Buffer:</b>	0.01 M PBS, pH 7.4, containing 0.05% Proclin-300, 50% glycerol.
<b>Note:</b>	This product is for research use only.

For Reference Only