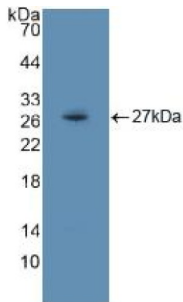
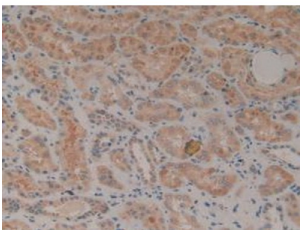


Receptor-type tyrosine-protein kinase FLT3 (FLT3) Antibody

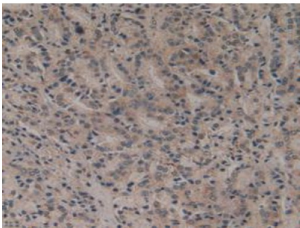
Catalogue No.: abx128669



Western blot analysis of recombinant Human Flt3.



IHC-P analysis of Human Kidney Tissue, with DAB staining.



IHC-P analysis of Human Prostate Gland Cancer Tissue, with DAB staining.

FMS Like Tyrosine Kinase 3 Antibody is a Rabbit Polyclonal against FMS Like Tyrosine Kinase 3.

Target: Receptor-type tyrosine-protein kinase FLT3 (FLT3)

Clonality: Polyclonal

Reactivity: Human

Tested Applications: WB, IHC, IF/ICC

Host: Rabbit

Recommended dilutions: WB: 1-5 µg/ml, IHC: 5-20 µg/ml, IF/ICC: 5-20 µg/ml. Optimal dilutions/concentrations should be determined by the end user.

Conjugation: Unconjugated

Datasheet

Version: 2.0.0

Revision date: 12 Mar 2025



Immunogen:	Flt3 (Lys334-Ser543)
Form:	Liquid
Purification:	Purified by antigen-specific affinity chromatography, followed by Protein A affinity chromatography.
Storage:	Aliquot and store at -20°C. Avoid repeated freeze/thaw cycles.
UniProt Primary AC:	P36888 (UniProt , ExPASy)
KEGG:	hsa:2322
String:	9606.ENSP00000241453
Buffer:	0.01 M PBS, pH 7.4, containing 0.05% Proclin-300, 50% glycerol.
Note:	THIS PRODUCT IS FOR RESEARCH USE ONLY. NOT FOR USE IN DIAGNOSTIC, THERAPEUTIC OR COSMETIC PROCEDURES. NOT FOR HUMAN OR ANIMAL CONSUMPTION.

For Reference Only