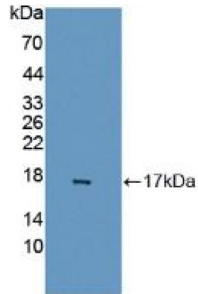
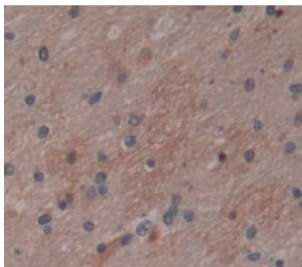


GABA-A Receptor Associated Protein Like Protein 2 (GABARAPL2) Antibody

Catalogue No.: abx128282



Western blot analysis of recombinant Human GABARAPL2.



IHC-P analysis of Kidney tissue, with DAB staining.

GABARAPL2 Antibody is a Rabbit Polyclonal against GABARAPL2.

Target:	GABA-A Receptor Associated Protein Like Protein 2 (GABARAPL2)
Clonality:	Polyclonal
Reactivity:	Human
Tested Applications:	WB, IHC, IF/ICC
Host:	Rabbit
Recommended dilutions:	WB: 0.01-2 µg/ml, IHC: 5-20 µg/ml, IF/ICC: 5-20 µg/ml. Optimal dilutions/concentrations should be determined by the end user.
Conjugation:	Unconjugated
Immunogen:	GABARAPL2 (Met1-Phe117)
Form:	Liquid
Purification:	Purified by antigen-specific affinity chromatography, followed by Protein A affinity chromatography.

Datasheet

Version: 2.0.0
Revision date: 23 Feb 2025



Storage: Aliquot and store at -20°C. Avoid repeated freeze/thaw cycles.

UniProt Primary AC: P60520 ([UniProt](#), [ExpASY](#))

KEGG: hsa:11345

String: [9606.ENSP00000037243](#)

Buffer: 0.01 M PBS, pH 7.4, containing 0.05% Proclin-300, 50% glycerol.

Note: This product is for research use only.

For Reference Only