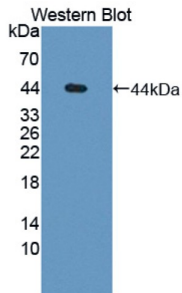
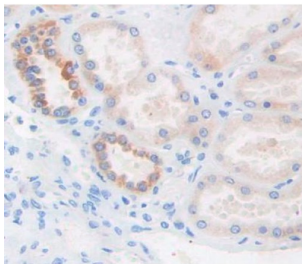


Glia Derived Nexin / GDN (SERPINE2) Antibody

Catalogue No.: abx128989



Western blot analysis of the recombinant protein.



IHC-P analysis of Human Tissue, with DAB staining.

Glia Derived Nexin Antibody is a Rabbit Polyclonal against Glia Derived Nexin.

| | |
|-------------------------------|--|
| Target: | Glia Derived Nexin / GDN (SERPINE2) |
| Clonality: | Polyclonal |
| Reactivity: | Human |
| Tested Applications: | WB, IHC, IF/ICC |
| Host: | Rabbit |
| Recommended dilutions: | WB: 0.5-2 µg/ml, IHC: 5-20 µg/ml, IF/ICC: 5-20 µg/ml. Optimal dilutions/concentrations should be determined by the end user. |
| Conjugation: | Unconjugated |
| Immunogen: | GDN (Ser20-Pro398) |
| Form: | Liquid |
| Purification: | Purified by antigen-specific affinity chromatography, followed by Protein A affinity chromatography. |
| Storage: | Aliquot and store at -20°C. Avoid repeated freeze/thaw cycles. |

Datasheet

Version: 1.0.0

Revision date: 31 Dec 2024



UniProt Primary AC: P07093 ([UniProt](#), [ExPASy](#))

KEGG: hsa:5270

String: [9606.ENSP00000415786](#)

Buffer: 0.01 M PBS, pH 7.4, containing 0.05% Proclin-300, 50% glycerol.

Note: This product is for research use only.

For Reference Only