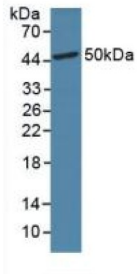
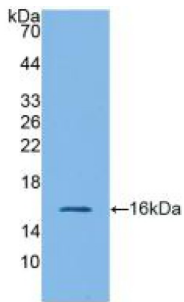


## Glucagon Like Peptide 1 Receptor (GLP1R) Antibody

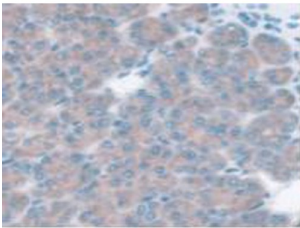
Catalogue No.: abx129903



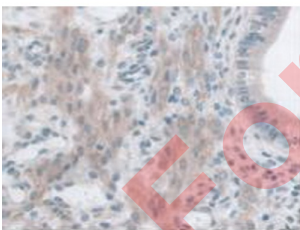
Western blot analysis of Mouse Brain Tissue.



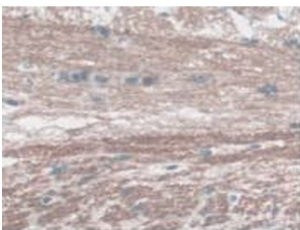
Western blot analysis of recombinant Mouse GLP1R.



IHC-P analysis of Mouse Stomach Tissue, with DAB staining.



IHC-P analysis of Mouse Uterus Tissue, with DAB staining.



IHC-P analysis of Mouse Brain Tissue, with DAB staining.

# Datasheet

Version: 2.0.0  
Revision date: 22 Nov 2024



GLP1R Antibody is a Rabbit Polyclonal against GLP1R.

<b>Target:</b>	Glucagon Like Peptide 1 Receptor (GLP1R)
<b>Clonality:</b>	Polyclonal
<b>Reactivity:</b>	Mouse
<b>Tested Applications:</b>	WB, IHC, IF/ICC
<b>Host:</b>	Rabbit
<b>Recommended dilutions:</b>	WB: 0.5-2 µg/ml, IHC: 5-20 µg/ml, IF/ICC: 5-20 µg/ml. Optimal dilutions/concentrations should be determined by the end user.
<b>Conjugation:</b>	Unconjugated
<b>Immunogen:</b>	GLP1R (Pro25-Tyr145)
<b>Form:</b>	Liquid
<b>Purification:</b>	Purified by antigen-specific affinity chromatography, followed by Protein A affinity chromatography.
<b>Storage:</b>	Aliquot and store at -20°C. Avoid repeated freeze/thaw cycles.
<b>UniProt Primary AC:</b>	O35659 ( <a href="#">UniProt</a> , <a href="#">ExPASy</a> )
<b>KEGG:</b>	mmu:14652
<b>String:</b>	<a href="#">10090.ENSMUSP00000110221</a>
<b>Buffer:</b>	0.01 M PBS, pH 7.4, containing 0.05% Proclin-300, 50% glycerol.
<b>Note:</b>	This product is for research use only.