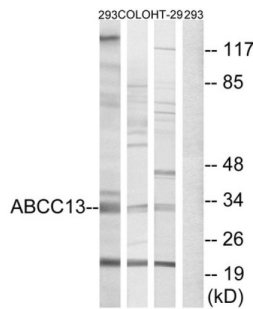
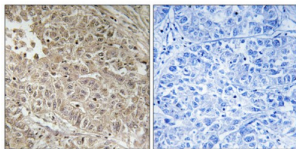


ATP Binding Cassette Transporter C13 (ABCC13) Antibody

Catalogue No.: abx014758



Western blot analysis of extracts from 293 cells, COLO cells and HT-29 cells, using ABCC13 antibody.



Immunohistochemistry analysis of paraffin-embedded human liver carcinoma tissue, using ABCC13 antibody.

Rabbit polyclonal antibody against ATP Binding Cassette Transporter C13 (ABCC13) protein. Immunogen region is Internal.

Target:	ATP Binding Cassette Transporter C13 (ABCC13)
Clonality:	Polyclonal
Reactivity:	Human
Tested Applications:	ELISA, WB, IHC
Host:	Rabbit
Recommended dilutions:	WB: 1/500 - 1/3000, IHC: 1/50 - 1/100, ELISA: 1/40000. Optimal dilutions/concentrations should be determined by the end user.
Conjugation:	Unconjugated
Immunogen:	The antiserum was produced against synthesized peptide derived from internal of human ABCC13.
Isotype:	IgG
Form:	Liquid
Purification:	Purified from rabbit antiserum by affinity chromatography using epitope-specific immunogen.

Datasheet

Version: 3.0.0

Revision date: 12 Apr 2025



Storage:	Aliquot and store at -20°C. Avoid repeated freeze/thaw cycles.
Sequence:	CEKQWRKEVLRNQERQ
Buffer:	PBS (without Mg ²⁺ and Ca ²⁺), pH 7.4, 150 mM NaCl, 0.02% sodium azide, 50% glycerol.
Concentration:	1 mg/ml
Note:	THIS PRODUCT IS FOR RESEARCH USE ONLY. NOT FOR USE IN DIAGNOSTIC, THERAPEUTIC OR COSMETIC PROCEDURES. NOT FOR HUMAN OR ANIMAL CONSUMPTION.

For Reference Only