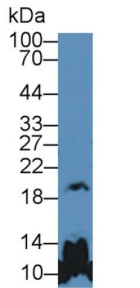
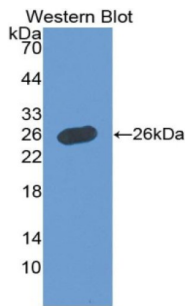


Somatotropin / Growth Hormone (GH1) Antibody

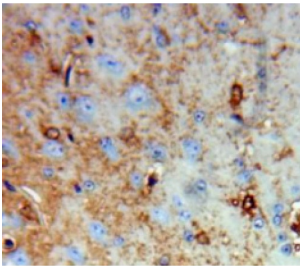
Catalogue No.: abx128487



Western blot analysis of Mouse Cerebrum lysate, using Human GH Antibody (5 µg/ml) and HRP-conjugated Goat Anti-Rabbit antibody ([abx400043](#), 0.2 µg/ml).



Western blot analysis of the recombinant protein.



IHC-P analysis of Brain tissue, with DAB staining.

Somatotropin / Growth Hormone Antibody is a Rabbit Polyclonal against Somatotropin / Growth Hormone.

Target: Somatotropin / Growth Hormone (GH1)

Clonality: Polyclonal

Reactivity: Human

Tested Applications: WB, IHC, IF/ICC

Host: Rabbit

Recommended dilutions: WB: 0.5-2 µg/ml, IHC: 5-20 µg/ml, IF/ICC: 5-20 µg/ml. Optimal dilutions/concentrations should be determined by the end user.

Conjugation: Unconjugated

Datasheet

Version: 2.0.0
Revision date: 27 Dec 2024



Immunogen:	Growth Hormone (Pro28-Phe217)
Form:	Liquid
Purification:	Purified by antigen-specific affinity chromatography, followed by Protein A affinity chromatography.
Storage:	Aliquot and store at -20°C. Avoid repeated freeze/thaw cycles.
UniProt Primary AC:	P01241 (UniProt , ExPASy)
Gene Symbol:	GH1
GeneID:	2688
OMIM:	139250
HGNC:	4261
KEGG:	hsa:2688
Ensembl:	ENSG00000259384
String:	9606.ENSP00000312673
Buffer:	0.01 M PBS, pH 7.4, containing 0.05% Proclin-300, 50% glycerol.
Note:	This product is for research use only.

For Reference Only