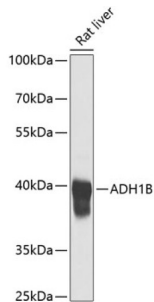


Alcohol Dehydrogenase 1B (ADH1B) Antibody

Catalogue No.: abx001235



Western blot analysis of extracts of Rat liver using ADH1B Antibody (1/1000 dilution).

ADH1B Antibody is a Rabbit Polyclonal antibody against ADH1B. The ADH1B gene encodes the beta subunit of class I alcohol dehydrogenase (ADH), an enzyme that catalyzes the rate-limiting step for ethanol metabolism: the oxidation of alcohol to acetaldehyde. Class 1 ADH is a homo- or heterodimeric molecule, formed by the association of 3 types of class I ADH subunits, alpha (ADH1A), beta, and gamma (ADH1C). ADH1B is also named as ADH2 and belongs to the zinc-containing alcohol dehydrogenase family. This protein can exist as a homodimer (PMID:19365573). This antibody is specific to ADH1B.

Target:	Alcohol Dehydrogenase 1B (ADH1B)
Clonality:	Polyclonal
Reactivity:	Rat
Tested Applications:	WB
Host:	Rabbit
Recommended dilutions:	WB: 1/500 - 1/2000. Optimal dilutions/concentrations should be determined by the end user.
Conjugation:	Unconjugated
Immunogen:	Recombinant fusion protein corresponding to human ADH1B
Isotype:	IgG
Form:	Liquid
Purification:	Purified by affinity chromatography.
Storage:	Aliquot and store at -20°C. Avoid repeated freeze/thaw cycles.
UniProt Primary AC:	P00325 (UniProt , ExPASy)

Datasheet

Version: 3.0.0

Revision date: 23 Feb 2025



Gene Symbol: ADH1B

GeneID: [125](#)

NCBI Accession: NP_000659.2

KEGG: hsa:125

String: [9606.ENSP00000306606](#)

Molecular Weight: Calculated MW: 35 kDa/39 kDa
Observed MW: 40 kDa

Buffer: PBS, pH 7.3, containing 0.02% sodium azide, 50% glycerol.

Concentration: 1 mg/ml

Note: This product is for research use only.

For Reference Only