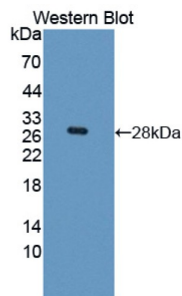
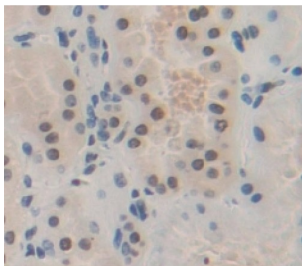


Transcription Factor HES-1 (HES1) Antibody

Catalogue No.: abx129126



Western blot analysis of the recombinant protein.



IHC-P analysis of Kidney tissue, with DAB staining.

Transcription Factor HES-1 Antibody is a Rabbit Polyclonal against Transcription Factor HES-1.

| | |
|-------------------------------|---|
| Target: | Transcription Factor HES-1 (HES1) |
| Clonality: | Polyclonal |
| Reactivity: | Human |
| Tested Applications: | WB, IHC, IF/ICC |
| Host: | Rabbit |
| Recommended dilutions: | WB: 0.01-2 µg/ml, IHC: 5-20 µg/ml, IF/ICC: 5-20 µg/ml. Optimal dilutions/concentrations should be determined by the end user. |
| Conjugation: | Unconjugated |
| Immunogen: | HES1 (Val21-Asn251) |
| Form: | Liquid |
| Purification: | Purified by antigen-specific affinity chromatography, followed by Protein A affinity chromatography. |
| Storage: | Aliquot and store at -20°C. Avoid repeated freeze/thaw cycles. |

Datasheet

Version: 4.0.0
Revision date: 30 Mar 2025



UniProt Primary AC: Q14469 ([UniProt](#), [ExpASY](#))

Gene Symbol: HES1

GeneID: [3280](#)

OMIM: [139605](#)

HGNC: 5192

KEGG: hsa:3280

Ensembl: ENSG00000114315

String: [9606.ENSP00000232424](#)

Buffer: 0.01 M PBS, pH 7.4, containing 0.05% Proclin-300, 50% glycerol.

Concentration: 1 mg/ml

Note: THIS PRODUCT IS FOR RESEARCH USE ONLY. NOT FOR USE IN DIAGNOSTIC, THERAPEUTIC OR COSMETIC PROCEDURES. NOT FOR HUMAN OR ANIMAL CONSUMPTION.

For Reference Only