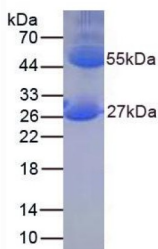


## Mouse Immunoglobulin G (IgG) Protein

Catalogue No.: abx168593



SDS-PAGE analysis of Immunoglobulin G Protein.

Immunoglobulin G Protein (Native) is a protein isolated from Mouse serum.

**Target:** Immunoglobulin G (IgG)

**Origin:** Mouse

**Expression:** Native

**Tested Applications:** WB, SDS-PAGE

**Host:** Mouse

**Conjugation:** Unconjugated

**Form:** Lyophilized

**Purity:** > 90%

**Reconstitution:** To keep the original salt concentration, we recommend reconstituting to the original concentration prior to lyophilization (see Concentration) in ddH<sub>2</sub>O. If a lower concentration is required, dilute in PBS, pH 7.4. If a higher concentration is required, the product can be reconstituted directly in PBS, pH 7.4, though please note that this will change the overall salt concentration. The stock concentration should be between 0.1-1.0 mg/ml. Do not vortex.

**Storage:** Store at 2-8 °C for up to one month. Store at -80 °C for up to one year. Avoid repeated freeze/thaw cycles.

**Molecular Weight:** Calculated MW: 30.0 kDa  
Observed MW: 30.0 kDa

**Sequence:** This product is a native protein and the sequence has not been determined.

**Buffer:** Prior to lyophilization: PBS, pH 7.4, containing 0.01% Sarcosyl, 1 mM DTT, 5% Trehalose and Proclin-300.

# Datasheet

Version: 1.0.0

Revision date: 26 Mar 2025



**Activity:** Not tested

**Concentration:** Prior to lyophilization: 200 µg/ml

**Note:** THIS PRODUCT IS FOR RESEARCH USE ONLY. NOT FOR USE IN DIAGNOSTIC, THERAPEUTIC OR COSMETIC PROCEDURES. NOT FOR HUMAN OR ANIMAL CONSUMPTION.

For Reference Only