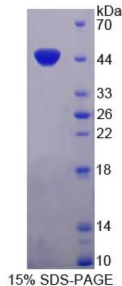


Human Immunoglobulin Superfamily Containing Leucine Rich Repeat Protein (ISLR) Protein

Catalogue No.: abx167981



SDS-PAGE analysis of Immunoglobulin Superfamily Containing Leucine Rich Repeat Protein.

Human Immunoglobulin Superfamily Containing Leucine Rich Repeat Protein (ISLR) is a recombinant Human protein expressed in *E. coli*.

This protein is the immunogen for the following antibodies: [abx128327](#), [abx132125](#)

Target:	Immunoglobulin Superfamily Containing Leucine Rich Repeat Protein (ISLR)
Origin:	Human
Expression:	Recombinant
Tested Applications:	WB, SDS-PAGE
Host:	<i>E. coli</i>
Conjugation:	Unconjugated
Form:	Lyophilized
Purity:	> 90%
Reconstitution:	To keep the original salt concentration, we recommend reconstituting to the original concentration prior to lyophilization (see Concentration) in ddH ₂ O. If a lower concentration is required, dilute in PBS, pH 7.4. If a higher concentration is required, the product can be reconstituted directly in PBS, pH 7.4, though please note that this will change the overall salt concentration. The stock concentration should be between 0.1-1.0 mg/ml. Do not vortex.
Storage:	Store at 2-8 °C for up to one month. Store at -80 °C for up to one year. Avoid repeated freeze/thaw cycles.
UniProt Primary AC:	O14498 (UniProt , ExPASy)

Datasheet

Version: 3.0.0
Revision date: 31 Jan 2025



KEGG: hsa:3671

String: [9606.ENSP00000249842](#)

Molecular Weight: Calculated MW: 47.6 kDa
Observed MW (SDS-PAGE): 48 kDa

Sequence Fragment: Cys19-Phe428

Tag: N-terminal His tag

Buffer: Prior to lyophilization: PBS, pH 7.4, containing 0.01% Sarcosyl, 1 mM DTT, 5% Trehalose and Proclin-300.

Activity: Not tested

Concentration: Prior to lyophilization: 200 µg/ml

Note: This product is for research use only.
Not for human consumption, cosmetic, therapeutic or diagnostic use.

For Reference Only