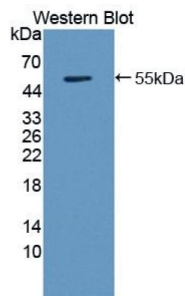
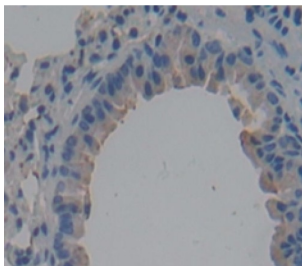


Immunoglobulin Superfamily, Member 2 (IGSF2) Antibody

Catalogue No.: abx129344



Western blot analysis of the recombinant protein.



IHC-P analysis of Kidney tissue, with DAB staining.

Immunoglobulin Superfamily, Member 2 Antibody is a Rabbit Polyclonal against Immunoglobulin Superfamily, Member 2.

Target:	Immunoglobulin Superfamily, Member 2 (IGSF2)
Clonality:	Polyclonal
Reactivity:	Mouse
Tested Applications:	WB, IHC, IF/ICC
Host:	Rabbit
Recommended dilutions:	WB: 0.01-2 µg/ml, IHC: 5-20 µg/ml, IF/ICC: 5-20 µg/ml. Optimal dilutions/concentrations should be determined by the end user.
Conjugation:	Unconjugated
Immunogen:	IGSF2 (Leu302-Thr531)
Form:	Liquid
Purification:	Purified by antigen-specific affinity chromatography, followed by Protein A affinity chromatography.
Storage:	Aliquot and store at -20°C. Avoid repeated freeze/thaw cycles.

Datasheet

Version: 4.0.0

Revision date: 12 Mar 2025



Buffer: 0.01 M PBS, pH 7.4, containing 0.05% Proclin-300, 50% glycerol.

Note: THIS PRODUCT IS FOR RESEARCH USE ONLY. NOT FOR USE IN DIAGNOSTIC, THERAPEUTIC OR COSMETIC PROCEDURES. NOT FOR HUMAN OR ANIMAL CONSUMPTION.

For Reference Only