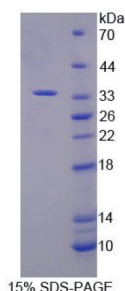


Human Inosine 5'-Monophosphate Dehydrogenase 2 (IMPDH2) Protein

Catalogue No.: abx166635



SDS-PAGE analysis of Inosine 5'-Monophosphate Dehydrogenase 2 Protein.

Inosine 5'-Monophosphate Dehydrogenase 2 Protein is a recombinant Human protein expressed in *E. coli*.

Target:	Inosine 5'-Monophosphate Dehydrogenase 2 (IMPDH2)
Origin:	Human
Expression:	Recombinant
Tested Applications:	WB, SDS-PAGE
Host:	<i>E. coli</i>
Conjugation:	Unconjugated
Form:	Lyophilized
Purity:	> 95%
Reconstitution:	To keep the original salt concentration, we recommend reconstituting to the original concentration prior to lyophilization (see Concentration) in ddH ₂ O. If a lower concentration is required, dilute in PBS, pH 7.4. If a higher concentration is required, the product can be reconstituted directly in PBS, pH 7.4, though please note that this will change the overall salt concentration. The stock concentration should be between 0.1-1.0 mg/ml. Do not vortex.
Storage:	Store at 2-8 °C for up to one month. Store at -80 °C for up to one year. Avoid repeated freeze/thaw cycles.
Molecular Weight:	Calculated MW: 34.8 kDa
Sequence Fragment:	Asp226-Phe514
Tag:	N-terminal His tag

Datasheet

Version: 1.0.0

Revision date: 29 Mar 2025



Buffer: Prior to lyophilization: PBS, pH 7.4, containing 0.01% Sarcosyl, 1 mM DTT, 5% Trehalose and Proclin-300.

Activity: Not tested

Concentration: Prior to lyophilization: 200 µg/ml

Note: THIS PRODUCT IS FOR RESEARCH USE ONLY. NOT FOR USE IN DIAGNOSTIC, THERAPEUTIC OR COSMETIC PROCEDURES. NOT FOR HUMAN OR ANIMAL CONSUMPTION.

For Reference Only