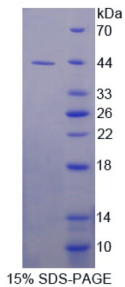


Rabbit Insulin Like Growth Factor 1 (IGF1) Protein

Catalogue No.: abx167556



SDS-PAGE analysis of Insulin Like Growth Factor 1 (IGF1) Protein.

Insulin Like Growth Factor 1 (IGF1) Protein is a recombinant Rabbit protein expressed in *E. coli*.

| | |
|-----------------------------|---|
| Target: | Insulin Like Growth Factor 1 (IGF1) |
| Origin: | Rabbit |
| Expression: | Recombinant |
| Tested Applications: | WB, SDS-PAGE |
| Host: | <i>E. coli</i> |
| Conjugation: | Unconjugated |
| Form: | Lyophilized |
| Purity: | > 95% |
| Reconstitution: | Reconstitute in ddH ₂ O to a concentration of 0.1-1.0 mg/ml. Do not vortex. |
| Storage: | Store at 2-8 °C for up to one month. Store at -80 °C for up to one year. Avoid repeated freeze/thaw cycles. |
| Molecular Weight: | Calculated MW: 42.6 kDa Observed MW (SDS-PAGE): 43 kDa |
| Sequence Fragment: | Gly33-Lys143 |
| Tag: | N-terminal His tag and GST tag |
| Buffer: | Prior to lyophilization: 100 mM NaHCO ₃ , 500 mM NaCl, pH 8.3, containing 1 mM EDTA, 1 mM DTT, 0.01% Sarcosyl, 5% Trehalose and Proclin-300. |

Datasheet

Version: 1.0.0

Revision date: 08 Apr 2025



Activity: Not tested

Concentration: Prior to lyophilization: 200 µg/ml

Note: THIS PRODUCT IS FOR RESEARCH USE ONLY. NOT FOR USE IN DIAGNOSTIC, THERAPEUTIC OR COSMETIC PROCEDURES. NOT FOR HUMAN OR ANIMAL CONSUMPTION.

For Reference Only