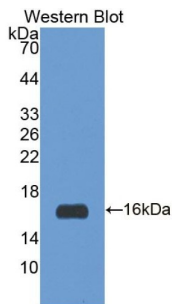
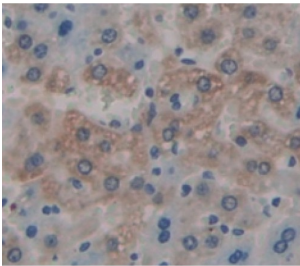


Insulin Receptor Substrate 3 (IRS3) Antibody

Catalogue No.: abx130421



Western blot analysis of the recombinant protein.



IHC-P analysis of Rat Tissue, with DAB staining.

Insulin Receptor Substrate 3 (IRS3) Antibody is a Rabbit Polyclonal against Insulin Receptor Substrate 3 (IRS3).

Target:	Insulin Receptor Substrate 3 (IRS3)
Clonality:	Polyclonal
Reactivity:	Rat
Tested Applications:	WB, IHC, IF/ICC
Host:	Rabbit
Recommended dilutions:	WB: 0.5-2 µg/ml, IHC: 5-20 µg/ml, IF/ICC: 5-20 µg/ml. Optimal dilutions/concentrations should be determined by the end user.
Conjugation:	Unconjugated
Immunogen:	IRS3 (Met1-Ser110)
Form:	Liquid
Purification:	Purified by antigen-specific affinity chromatography, followed by Protein A affinity chromatography.
Storage:	Aliquot and store at -20°C. Avoid repeated freeze/thaw cycles.

Datasheet

Version: 1.0.0
Revision date: 08 Nov 2024



UniProt Primary AC: B1WBQ1 ([UniProt](#), [ExPASy](#))

String: [10116.ENSRNOP00000001874](#)

Buffer: 0.01 M PBS, pH 7.4, containing 0.05% Proclin-300, 50% glycerol.

Note: This product is for research use only.

For Reference Only