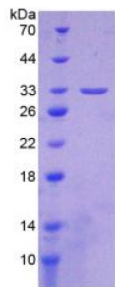


Mouse Integrin Alpha 1 (ITGa1) Protein

Catalogue No.: abx167317



SDS-PAGE analysis of Integrin alpha 1 Protein.

Integrin Alpha 1 Protein is a recombinant Mouse protein expressed in *E. coli*.

Target:	Integrin Alpha 1 (ITGa1)
Origin:	Mouse
Expression:	Recombinant
Tested Applications:	WB, SDS-PAGE
Host:	<i>E. coli</i>
Conjugation:	Unconjugated
Form:	Lyophilized
Purity:	> 97%
Reconstitution:	To keep the original salt concentration, we recommend reconstituting to the original concentration prior to lyophilization (see Concentration) in ddH ₂ O. If a lower concentration is required, dilute in 20 mM Tris, 150 mM NaCl, pH 8.0. If a higher concentration is required, the product can be reconstituted directly in 20 mM Tris, 150 mM NaCl, pH 8.0, though please note that this will change the overall salt concentration. The stock concentration should be between 0.1-1.0 mg/ml. Do not vortex.
Storage:	Store at 2-8 °C for up to one month. Store at -80 °C for up to one year. Avoid repeated freeze/thaw cycles.
Molecular Weight:	Calculated MW: 33.1 kDa Observed MW (SDS-PAGE): 33 kDa
Sequence Fragment:	Ile103-Gln368
Tag:	N-terminal His tag

Datasheet

Version: 2.0.0

Revision date: 14 Jan 2025



Buffer: Prior to lyophilization: 20 mM Tris, 150 mM NaCl, pH 8.0, containing 1 mM EDTA, 1 mM DTT, 0.01% Sarcosyl, 5% Trehalose and Proclin-300.

Activity: Not tested

Concentration: Prior to lyophilization: 200 µg/ml

Note: This product is for research use only.
Not for human consumption, cosmetic, therapeutic or diagnostic use.

For Reference Only