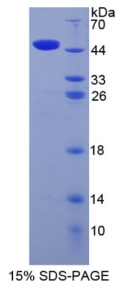


## Mouse Integrin Alpha 2 (ITGa2) Protein

Catalogue No.: abx167440



SDS-PAGE analysis of recombinant Mouse Integrin alpha 2 Protein.

Mouse Integrin Alpha 2 Protein is a recombinant Mouse protein expressed in E. coli.

<b>Target:</b>	Integrin Alpha 2 (ITGa2)
<b>Origin:</b>	Mouse
<b>Expression:</b>	Recombinant
<b>Tested Applications:</b>	WB, SDS-PAGE
<b>Host:</b>	E. coli
<b>Conjugation:</b>	Unconjugated
<b>Form:</b>	Lyophilized
<b>Purity:</b>	> 97%
<b>Reconstitution:</b>	Reconstitute in ddH <sub>2</sub> O to a concentration of 0.1-0.25 mg/ml. Do not vortex.
<b>Storage:</b>	Store at 2-8 °C for up to one month. Store at -80 °C for up to one year. Avoid repeated freeze/thaw cycles.
<b>Molecular Weight:</b>	Calculated MW: 47.5 kDa Observed MW: 48 kDa
<b>Sequence Fragment:</b>	Gln212-Asn370
<b>Sequence:</b>	QYANEPRII FNLNDFETKE DMVQATSETR QHGGDLTNTF RAIEFARDYA YSQTSGGRPG ATKVMVVVTD GESHDGSKLK TVIQQCNDDE ILRFGIAVLG YLNRNALDTK NLIKEIKAIA STPTERYFFN VADEAALL EK AGTLGSEQIFS IEGTVQGGDN
<b>Tag:</b>	N-terminal His tag and GST tag

# Datasheet

Version: 3.0.0

Revision date: 23 Feb 2025



**Buffer:** Prior to lyophilization: PBS, pH 7.4, containing 0.01% Sarcosyl, 5% Trehalose.

**Activity:** Not tested

**Concentration:** Prior to lyophilization: 50 µg/ml

**Note:** This product is for research use only.  
Not for human consumption, cosmetic, therapeutic or diagnostic use.

For Reference Only