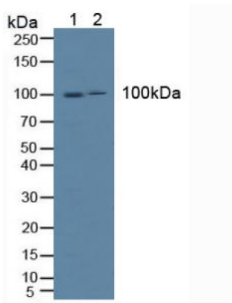
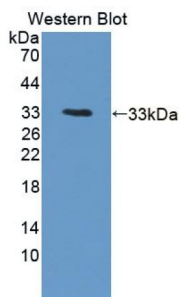


Intercellular Adhesion Molecule 1 (ICAM1) Antibody

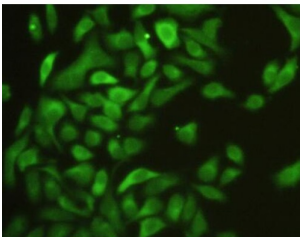
Catalogue No.: abx130249



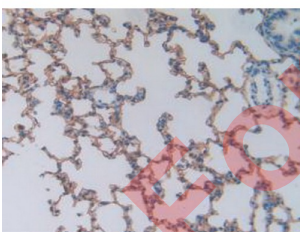
Western blot analysis of (1) Human HeLa cells and (2) Human K562 Cells.



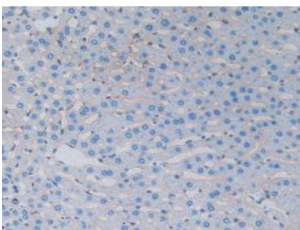
Western blot analysis of recombinant Rat ICAM1.



IHC-P analysis of HeLa cells, with FITC staining.



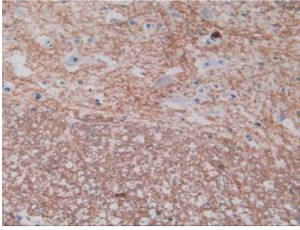
IHC-P analysis of Rat Lung Tissue, with DAB staining.



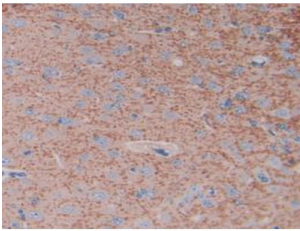
IHC-P analysis of Rat Liver Tissue, with DAB staining.

Datasheet

Version: 1.0.0
Revision date: 15 Jan 2025



IHC-P analysis of Rat Spinal Cord Tissue, with DAB staining.



IHC-P analysis of Rat Brain Tissue, with DAB staining.

Intercellular Adhesion Molecule 1 Antibody is a Rabbit Polyclonal against Intercellular Adhesion Molecule 1.

Target:	Intercellular Adhesion Molecule 1 (ICAM1)
Clonality:	Polyclonal
Reactivity:	Rat
Tested Applications:	WB, IHC, IF/ICC
Host:	Rabbit
Recommended dilutions:	WB: 0.01-5 µg/ml, IHC: 5-20 µg/ml, IF/ICC: 5-20 µg/ml. Optimal dilutions/concentrations should be determined by the end user.
Conjugation:	Unconjugated
Immunogen:	ICAM1 (Ser102-Arg306)
Form:	Liquid
Purification:	Purified by antigen-specific affinity chromatography, followed by Protein A affinity chromatography.
Storage:	Aliquot and store at -20°C. Avoid repeated freeze/thaw cycles.
UniProt Primary AC:	Q00238 (UniProt , ExpASY)

Datasheet

Version: 1.0.0

Revision date: 15 Jan 2025



Buffer: 0.01 M PBS, pH 7.4, containing 0.05% Proclin-300, 50% glycerol.

Note: This product is for research use only.

For Reference Only