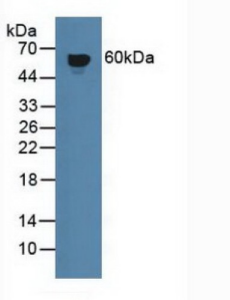
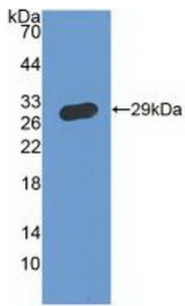


Interferon Gamma Receptor 1 (IFNGR1) Antibody

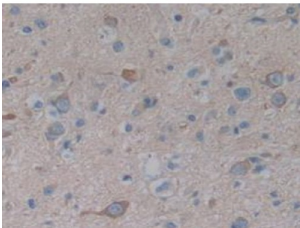
Catalogue No.: abx128789



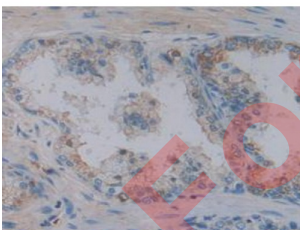
Western blot analysis of Human Blood Cells.



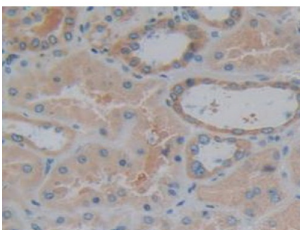
Western blot analysis of recombinant Human IFNGR1.



IHC-P analysis of Human Glioma Tissue, with DAB staining.



IHC-P analysis of Human Prostate Gland Tissue, with DAB staining.



IHC-P analysis of Human Kidney Tissue, with DAB staining.

Datasheet

Version: 1.0.0
Revision date: 28 Dec 2024



Interferon Gamma Receptor 1 Antibody is a Rabbit Polyclonal against Interferon Gamma Receptor 1.

Target:	Interferon Gamma Receptor 1 (IFNGR1)
Clonality:	Polyclonal
Reactivity:	Human
Tested Applications:	WB, IHC, IF/ICC
Host:	Rabbit
Recommended dilutions:	WB: 0.5-2 µg/ml, IHC: 5-20 µg/ml, IF/ICC: 5-20 µg/ml. Optimal dilutions/concentrations should be determined by the end user.
Conjugation:	Unconjugated
Immunogen:	IFNgR1 (Glu18-Gly245)
Form:	Liquid
Purification:	Purified by antigen-specific affinity chromatography, followed by Protein A affinity chromatography.
Storage:	Aliquot and store at -20°C. Avoid repeated freeze/thaw cycles.
Buffer:	0.01 M PBS, pH 7.4, containing 0.05% Proclin-300, 50% glycerol.
Note:	This product is for research use only.

For Reference Only