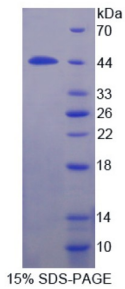
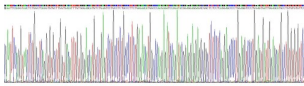


Mouse Interleukin 12 Receptor Beta 1 (IL12Rb1) Protein

Catalogue No.: abx167505



SDS-PAGE analysis of recombinant Mouse IL12RB1 Protein.



Gene sequencing extract of recombinant Mouse IL12RB1 Protein.

Mouse Interleukin 12 Receptor Beta 1 Protein is a recombinant Mouse protein expressed in *E. coli*.

Target: Interleukin 12 Receptor Beta 1 (IL12Rb1)

Origin: Mouse

Expression: Recombinant

Tested Applications: WB, SDS-PAGE

Host: *E. coli*

Conjugation: Unconjugated

Form: Lyophilized

Purity: > 90%

Reconstitution: Reconstitute in ddH₂O to a concentration of 0.1-0.5 mg/ml. Do not vortex.

Storage: Store at 2-8 °C for up to one month. Store at -80 °C for up to one year. Avoid repeated freeze/thaw cycles.

Datasheet

Version: 3.0.0
Revision date: 13 Mar 2025



Molecular Weight:	Calculated MW: 37.1 kDa Observed MW (SDS-PAGE): 44 kDa Possible reasons why the actual band size differs from the predicted band size: <ol style="list-style-type: none">1. Splice variants. Alternative splicing may create different sized proteins from the same gene.2. Relative charge. The composition of amino acids may affect the charge of the protein.3. Post-translational modification. Phosphorylation, glycosylation, methylation etc. may affect the band size.4. Post-translational cleavage. Many proteins are synthesised as pro-proteins, and then cleaved to give the active form.5. Polymerisation of the target protein. Dimerisation, multimerisation etc. will increase the band size observed.
Sequence Fragment:	Ser284-Arg348
Sequence:	SPQLAVP EGCRGRPGAQ VKKHLVLRM LSCRCQAQTS KTVPLGKKLN LSGATYDLNV LAKTRFGR
Tag:	N-terminal His tag and GST tag
Buffer:	Prior to lyophilization: PBS, pH 7.4, containing 0.01% Sarcosyl, 5% Trehalose.
Activity:	Not tested
Concentration:	Prior to lyophilization: 50 µg/ml
Note:	THIS PRODUCT IS FOR RESEARCH USE ONLY. NOT FOR USE IN DIAGNOSTIC, THERAPEUTIC OR COSMETIC PROCEDURES. NOT FOR HUMAN OR ANIMAL CONSUMPTION.

For Reference Only