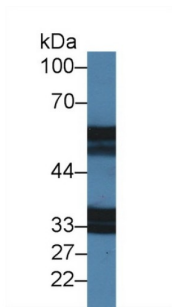
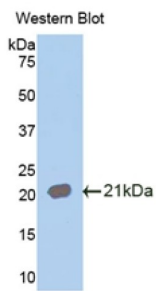


Interleukin 18 Receptor 1 (IL18R1) Antibody

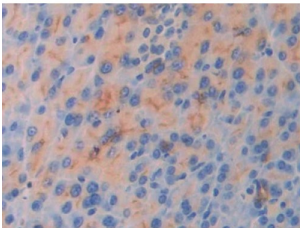
Catalogue No.: abx129561



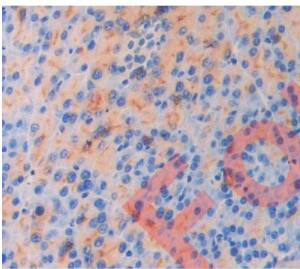
Western blot analysis of Mouse Stomach lysate, using Mouse IL18R1 Antibody (2 µg/ml) and HRP-conjugated Goat Anti-Rabbit antibody ([abx400043](#), 0.2 µg/ml).



Western blot analysis of the recombinant protein.



IHC-P analysis of Mouse Pancreas Tissue, with DAB staining.



IHC-P analysis of pancreas tissue, with DAB staining.

Interleukin 18 Receptor 1 Antibody is a Rabbit Polyclonal against Interleukin 18 Receptor 1.

Target: Interleukin 18 Receptor 1 (IL18R1)

Clonality: Polyclonal

Reactivity: Mouse

Datasheet

Version: 1.0.0
Revision date: 06 Oct 2024



| | |
|-------------------------------|--|
| Tested Applications: | WB, IHC, IF/ICC |
| Host: | Rabbit |
| Recommended dilutions: | WB: 0.5-2 µg/ml, IHC: 5-20 µg/ml, IF/ICC: 5-20 µg/ml. Optimal dilutions/concentrations should be determined by the end user. |
| Conjugation: | Unconjugated |
| Immunogen: | IL18R1 (Cys182-Val336) |
| Form: | Liquid |
| Purification: | Purified by antigen-specific affinity chromatography, followed by Protein A affinity chromatography. |
| Storage: | Aliquot and store at -20°C. Avoid repeated freeze/thaw cycles. |
| Buffer: | 0.01 M PBS, pH 7.4, containing 0.05% Proclin-300, 50% glycerol. |
| Note: | This product is for research use only. |

For Reference Only