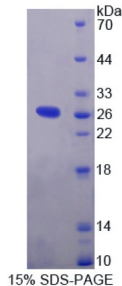


Human Interleukin 1 Receptor Accessory Protein Like Protein 2 (IL1RAPL2) Protein

Catalogue No.: abx167958



SDS-PAGE analysis of IL1RAPL2 Protein.

Interleukin 1 Receptor Accessory Protein Like Protein 2 is a recombinant Human protein expressed in E. coli.

Target:	Interleukin 1 Receptor Accessory Protein Like Protein 2 (IL1RAPL2)
Origin:	Human
Expression:	Recombinant
Tested Applications:	WB, SDS-PAGE
Host:	E. coli
Conjugation:	Unconjugated
Form:	Lyophilized
Purity:	> 95%
Reconstitution:	To keep the original salt concentration, we recommend reconstituting to the original concentration prior to lyophilization (see Concentration) in ddH ₂ O. If a lower concentration is required, dilute in PBS, pH 7.4. If a higher concentration is required, the product can be reconstituted directly in PBS, pH 7.4, though please note that this will change the overall salt concentration. The stock concentration should be between 0.1-1.0 mg/ml. Do not vortex.
Storage:	Store at 2-8 °C for up to one month. Store at -80 °C for up to one year. Avoid repeated freeze/thaw cycles.
Molecular Weight:	Calculated MW: 23.1 kDa
Sequence Fragment:	Ser161-Thr330

Datasheet

Version: 4.0.0

Revision date: 12 Mar 2025



Tag:	N-terminal His tag
Buffer:	Prior to lyophilization: PBS, pH 7.4, containing 0.01% Sarcosyl, 1 mM DTT, 5% Trehalose and Proclin-300.
Activity:	Not tested
Concentration:	Prior to lyophilization: 200 µg/ml
Note:	THIS PRODUCT IS FOR RESEARCH USE ONLY. NOT FOR USE IN DIAGNOSTIC, THERAPEUTIC OR COSMETIC PROCEDURES. NOT FOR HUMAN OR ANIMAL CONSUMPTION.

For Reference Only