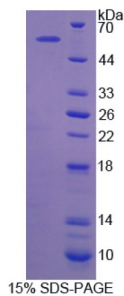


## Rat Interleukin 22 Receptor (IL22R) Protein

Catalogue No.: abx167727



SDS-PAGE analysis of IL22R Protein.

Interleukin 22 Receptor Protein is a recombinant Rat protein expressed in *E. coli*.

**Target:** Interleukin 22 Receptor (IL22R)

**Origin:** Rat

**Expression:** Recombinant

**Tested Applications:** WB, SDS-PAGE

**Host:** *E. coli*

**Conjugation:** Unconjugated

**Form:** Lyophilized

**Purity:** > 90%

**Reconstitution:** To keep the original salt concentration, we recommend reconstituting to the original concentration prior to lyophilization (see Concentration) in ddH<sub>2</sub>O. If a lower concentration is required, dilute in 20 mM Tris, 150 mM NaCl, pH 8.0. If a higher concentration is required, the product can be reconstituted directly in 20 mM Tris, 150 mM NaCl, pH 8.0, though please note that this will change the overall salt concentration. The stock concentration should be between 0.1-1.0 mg/ml. Do not vortex.

**Storage:** Store at 2-8 °C for up to one month. Store at -80 °C for up to one year. Avoid repeated freeze/thaw cycles.

**Molecular Weight:** Calculated MW: 30.0 kDa  
Observed MW (SDS-PAGE): 33 kDa

**Sequence Fragment:** Leu242-Pro485

**Tag:** N-terminal His tag

# Datasheet

Version: 2.0.0

Revision date: 23 Feb 2025



**Buffer:** Prior to lyophilization: 20 mM Tris, 150 mM NaCl, pH 8.0, containing 1 mM EDTA, 1 mM DTT, 0.01% Sarcosyl, 5% Trehalose and Proclin-300.

**Activity:** Not tested

**Concentration:** Prior to lyophilization: 200 µg/ml

**Note:** This product is for research use only.  
Not for human consumption, cosmetic, therapeutic or diagnostic use.

For Reference Only