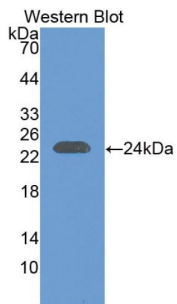
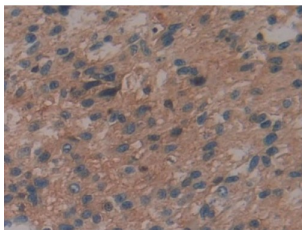


Interleukin 29 (IL29) Antibody

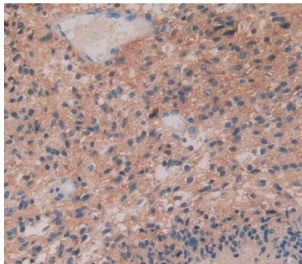
Catalogue No.: abx128828



Western blot analysis of the recombinant protein.



IHC-P analysis of Human Glioma Tissue, with DAB staining.



IHC-P analysis of glioma tissue, with DAB staining.

Interleukin 29 Antibody is a Rabbit Polyclonal against Interleukin 29.

Target: Interleukin 29 (IL29)

Clonality: Polyclonal

Reactivity: Human

Tested Applications: WB, IHC, IF/ICC

Host: Rabbit

Recommended dilutions: WB: 0.5-2 µg/ml, IHC: 5-20 µg/ml, IF/ICC: 5-20 µg/ml. Optimal dilutions/concentrations should be determined by the end user.

Conjugation: Unconjugated

Datasheet

Version: 2.0.0
Revision date: 05 Jan 2025



Immunogen:	IL29 (Gly20-Thr200)
Form:	Liquid
Purification:	Purified by antigen-specific affinity chromatography, followed by Protein A affinity chromatography.
Storage:	Aliquot and store at -20°C. Avoid repeated freeze/thaw cycles.
UniProt Primary AC:	Q8IU54 (UniProt , ExPASy)
KEGG:	hsa:282618
String:	9606.ENSP00000329991
Buffer:	0.01 M PBS, pH 7.4, containing 0.05% Proclin-300, 50% glycerol.
Note:	This product is for research use only.

For Reference Only