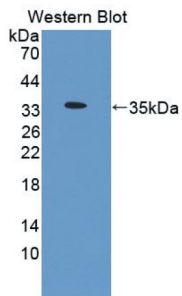
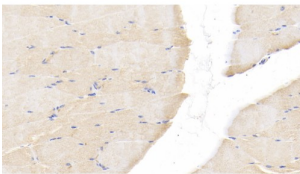


Interleukin 1 Beta (IL1b) Antibody

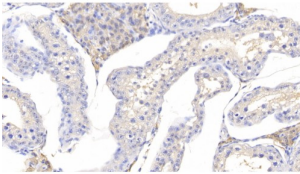
Catalogue No.: abx104871



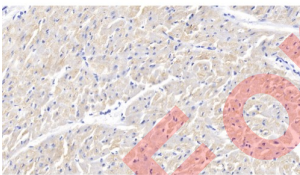
Western blot analysis of recombinant Cow IL1B.



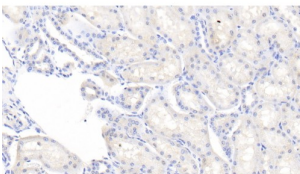
IHC-P analysis of Cow Skeletal Muscle Tissue, with DAB staining, using Rabbit Anti-Cow IL1B Antibody (20 µg/ml) and HRP-conjugated Goat Anti-Rabbit antibody ([abx400043](#), 2 µg/ml).



IHC-P analysis of Cow Testis Tissue, with DAB staining, using Rabbit Anti-Cow IL1B Antibody (20 µg/ml) and HRP-conjugated Goat Anti-Rabbit antibody ([abx400043](#), 2 µg/ml).



IHC-P analysis of Cow Cardiac Muscle Tissue, with DAB staining, using Rabbit Anti-Cow IL1B Antibody (20 µg/ml) and HRP-conjugated Goat Anti-Rabbit antibody ([abx400043](#), 2 µg/ml).



IHC-P analysis of Cow Kidney Tissue, with DAB staining, using Rabbit Anti-Cow IL1B Antibody (20 µg/ml) and HRP-conjugated Goat Anti-Rabbit antibody ([abx400043](#), 2 µg/ml).

Datasheet

Version: 4.0.0
Revision date: 14 Jan 2025



Interleukin 1 Beta Antibody is a Rabbit Polyclonal against Interleukin 1 Beta.

Target:	Interleukin 1 Beta (IL1b)
Clonality:	Polyclonal
Reactivity:	Cow
Tested Applications:	WB, IHC, IF/ICC
Host:	Rabbit
Recommended dilutions:	WB: 0.01-2 µg/ml, IHC: 5-20 µg/ml, IF/ICC: 5-20 µg/ml. Optimal dilutions/concentrations should be determined by the end user.
Conjugation:	Unconjugated
Immunogen:	abx166303 - Recombinant IL1b (Met1-Pro266) expressed in E. coli
Form:	Liquid
Purification:	Purified by antigen-specific affinity chromatography, followed by Protein A affinity chromatography.
Storage:	Aliquot and store at -20°C. Avoid repeated freeze/thaw cycles.
UniProt Primary AC:	P08831 (UniProt , ExpASY)
KEGG:	bta:281250
String:	9913.ENSBTAP00000013665
Buffer:	0.01 M PBS, pH 7.4, containing 0.05% Proclin-300, 50% glycerol.
Concentration:	1 mg/ml
Note:	This product is for research use only.