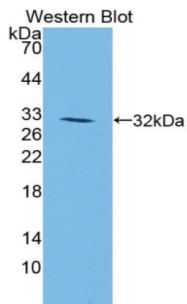
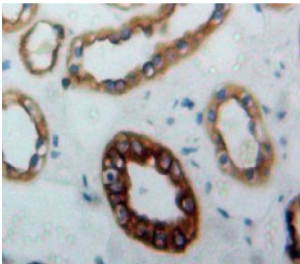


## Jagged 1 Protein (JAG1) Antibody

Catalogue No.: abx129567



Western blot analysis of the recombinant protein.



IHC-P analysis of Kidney tissue, with DAB staining.

Jagged 1 Protein Antibody is a Rabbit Polyclonal against Jagged 1 Protein.

<b>Target:</b>	Jagged 1 Protein (JAG1)
<b>Clonality:</b>	Polyclonal
<b>Reactivity:</b>	Mouse
<b>Tested Applications:</b>	WB, IHC, IF/ICC
<b>Host:</b>	Rabbit
<b>Recommended dilutions:</b>	WB: 0.5-2 µg/ml, IHC: 5-20 µg/ml, IF/ICC: 5-20 µg/ml. Optimal dilutions/concentrations should be determined by the end user.
<b>Conjugation:</b>	Unconjugated
<b>Immunogen:</b>	JAG1 (Ser826-Cys1084)
<b>Form:</b>	Liquid
<b>Purification:</b>	Purified by antigen-specific affinity chromatography, followed by Protein A affinity chromatography.
<b>Storage:</b>	Aliquot and store at -20°C. Avoid repeated freeze/thaw cycles.

# Datasheet

Version: 2.0.0

Revision date: 27 Dec 2024



**UniProt Primary AC:** Q9QXX0 ([UniProt](#), [ExPASy](#))

**String:** [10090.ENSMUSP00000028735](#)

**Buffer:** 0.01 M PBS, pH 7.4, containing 0.05% Proclin-300, 50% glycerol.

**Note:** This product is for research use only.

For Reference Only