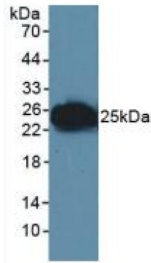
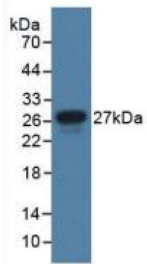


Junctional Adhesion Molecule 1 / JAM1 (F11R) Antibody

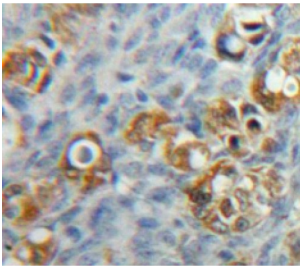
Catalogue No.: abx128588



Western blot analysis of Human Lymphocyte Cells.



Western blot analysis of recombinant Human JAM1.



IHC-P analysis of Ovary tissue, with DAB staining.

Junctional Adhesion Molecule 1 / JAM1 Antibody is a Rabbit Polyclonal against Junctional Adhesion Molecule 1 / JAM1.

Target: Junctional Adhesion Molecule 1 / JAM1 (F11R)

Clonality: Polyclonal

Reactivity: Human

Tested Applications: WB, IHC, IF/ICC

Host: Rabbit

Recommended dilutions: WB: 0.5-2 µg/ml, IHC: 5-20 µg/ml, IF/ICC: 5-20 µg/ml. Optimal dilutions/concentrations should be determined by the end user.

Conjugation: Unconjugated

Datasheet

Version: 3.0.0
Revision date: 24 Nov 2024



Immunogen:	JAM1 (Phe64-Leu249)
Form:	Liquid
Purification:	Purified by antigen-specific affinity chromatography, followed by Protein A affinity chromatography.
Storage:	Aliquot and store at -20°C. Avoid repeated freeze/thaw cycles.
UniProt Primary AC:	Q9Y624 (UniProt , ExPASy)
String:	9606.ENSP00000357005
Buffer:	0.01 M PBS, pH 7.4, containing 0.05% Proclin-300, 50% glycerol.
Note:	This product is for research use only.

For Reference Only