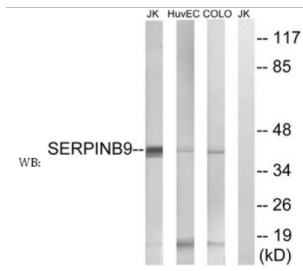
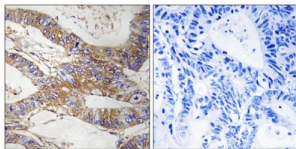


Serpin B9 (SERPINB9) Antibody

Catalogue No.: abx014874



Western blot analysis of extracts from Jurkat cells, using SERPINB9 antibody.



Immunohistochemistry analysis of paraffin-embedded human colon carcinoma tissue, using SERPINB9 antibody.

Rabbit polyclonal antibody against SERPINB9 protein. Immunogen region is Internal.

Target: Serpin B9 (SERPINB9)

Clonality: Polyclonal

Reactivity: Human, Mouse, Rat

Tested Applications: ELISA, WB, IHC

Host: Rabbit

Recommended dilutions: WB: 1/500 - 1/3000, IHC: 1/50 - 1/100, ELISA: 1/20000. Optimal dilutions/concentrations should be determined by the end user.

Conjugation: Unconjugated

Immunogen: The antiserum was produced against synthesized peptide derived from internal of human SERPINB9.

Isotype: IgG

Form: Liquid

Purification: Purified from rabbit antiserum by affinity chromatography using epitope-specific immunogen.

Datasheet

Version: 2.0.0
Revision date: 14 Jan 2025



| | |
|----------------------------|--|
| Storage: | Aliquot and store at -20°C. Avoid repeated freeze/thaw cycles. |
| UniProt Primary AC: | P50453 (UniProt , ExPASy) |
| KEGG: | hsa:5272 |
| String: | 9606.ENSP00000370074 |
| Sequence: | CLPKFKLQEDYDMES |
| Buffer: | PBS (without Mg ²⁺ and Ca ²⁺), pH 7.4, 150 mM NaCl, 0.02% sodium azide, 50% glycerol. |
| Concentration: | 1 mg/ml |
| Note: | This product is for research use only. |

For Reference Only