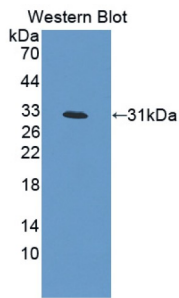
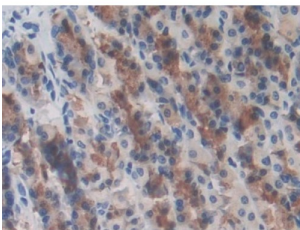


Leucine Rich Repeat Containing Protein 32 (LRRC32) Antibody

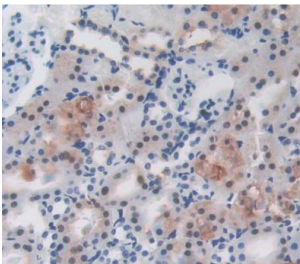
Catalogue No.: abx130377



Western blot analysis of the recombinant protein.



IHC-P analysis of Rat Stomach Tissue, with DAB staining.



IHC-P analysis of Kidney tissue, with DAB staining.

Leucine Rich Repeat Containing Protein 32 Antibody is a Rabbit Polyclonal against Leucine Rich Repeat Containing Protein 32.

Target: Leucine Rich Repeat Containing Protein 32 (LRRC32)

Clonality: Polyclonal

Reactivity: Rat

Tested Applications: WB, IHC, IF/ICC

Host: Rabbit

Recommended dilutions: WB: 0.5-2 µg/ml, IHC: 5-20 µg/ml, IF/ICC: 5-20 µg/ml. Optimal dilutions/concentrations should be determined by the end user.

Conjugation: Unconjugated

Datasheet

Version: 2.0.0

Revision date: 25 Nov 2024



Immunogen:	LRRC32 (Leu162-Tyr405)
Form:	Liquid
Purification:	Purified by antigen-specific affinity chromatography, followed by Protein A affinity chromatography.
Storage:	Aliquot and store at -20°C. Avoid repeated freeze/thaw cycles.
Buffer:	0.01 M PBS, pH 7.4, containing 0.05% Proclin-300, 50% glycerol.
Note:	This product is for research use only.

For Reference Only