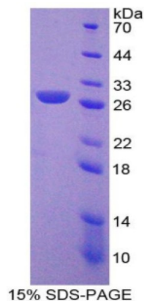


Human Leukocyte Immunoglobulin Like Receptor Subfamily B, Member 2 (LILRB2) Protein

Catalogue No.: abx168118



SDS-PAGE analysis of Leukocyte Immunoglobulin Like Receptor Subfamily B, Member 2 Protein.

Leukocyte Immunoglobulin Like Receptor Subfamily B, Member 2 Protein is a recombinant Human protein expressed in *E. coli*.

Target:	Leukocyte Immunoglobulin Like Receptor Subfamily B, Member 2 (LILRB2)
Origin:	Human
Expression:	Recombinant
Tested Applications:	WB, SDS-PAGE
Host:	<i>E. coli</i>
Conjugation:	Unconjugated
Form:	Lyophilized
Purity:	> 95%
Reconstitution:	To keep the original salt concentration, we recommend reconstituting to the original concentration prior to lyophilization (see Concentration) in ddH ₂ O. If a lower concentration is required, dilute in PBS, pH 7.4. If a higher concentration is required, the product can be reconstituted directly in PBS, pH 7.4, though please note that this will change the overall salt concentration. The stock concentration should be between 0.1-1.0 mg/ml. Do not vortex.
Storage:	Store at 2-8 °C for up to one month. Store at -80 °C for up to one year. Avoid repeated freeze/thaw cycles.
UniProt Primary AC:	Q8N423 (UniProt , ExpASY)
String:	9606.ENSP00000375629

Datasheet

Version: 2.0.0

Revision date: 31 Jan 2025



Molecular Weight: Calculated MW: 26.4 kDa
Observed MW (SDS-PAGE): 26 kDa

Sequence Fragment: Leu53-Val255

Tag: N-terminal His tag

Buffer: Prior to lyophilization: PBS, pH 7.4, containing 0.01% Sarcosyl, 1 mM DTT, 5% Trehalose and Proclin-300.

Activity: Not tested

Concentration: Prior to lyophilization: 200 µg/ml

Note: This product is for research use only.
Not for human consumption, cosmetic, therapeutic or diagnostic use.

For Reference Only