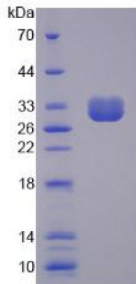


Human Nuclear Receptor Subfamily 5 Group A Member 2 (NR5A2) Protein

Catalogue No.: abx166900



SDS-PAGE analysis of Human LRH1 Protein.

Human NR5A2 Protein is a recombinant Human protein expressed in E. coli.

Target:	Nuclear Receptor Subfamily 5 Group A Member 2 (NR5A2)
Origin:	Human
Expression:	Recombinant
Tested Applications:	WB, SDS-PAGE
Host:	E. coli
Conjugation:	Unconjugated
Form:	Lyophilized
Purity:	> 95%
Reconstitution:	To keep the original salt concentration, we recommend reconstituting to the original concentration prior to lyophilization (see Concentration) in ddH ₂ O. If a lower concentration is required, dilute in 20 mM Tris, 150 mM NaCl, pH 8.0. If a higher concentration is required, the product can be reconstituted directly in 20 mM Tris, 150 mM NaCl, pH 8.0, though please note that this will change the overall salt concentration. The stock concentration should be between 0.1-1.0 mg/ml. Do not vortex.
Storage:	Store at 2-8 °C for up to one month. Store at -80 °C for up to one year. Avoid repeated freeze/thaw cycles.
Molecular Weight:	Calculated MW: 31.7 kDa Observed MW (SDS-PAGE): 29 kDa
Sequence Fragment:	Ser300-Ala541

Datasheet

Version: 1.0.0

Revision date: 05 Feb 2025



Tag:	N-terminal His tag
Buffer:	Prior to lyophilization: 20 mM Tris, 150 mM NaCl, pH 8.0, containing 1 mM EDTA, 1 mM DTT, 0.01% Sarcosyl, 5% Trehalose and Proclin-300.
Activity:	Not tested
Concentration:	Prior to lyophilization: 200 µg/ml
Note:	This product is for research use only. Not for human consumption, cosmetic, therapeutic or diagnostic use.

For Reference Only