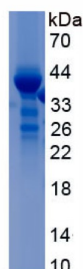
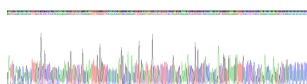


## Rat C-C Motif Chemokine 20 / MIP3A (CCL20) Protein

Catalogue No.: abx166112



SDS-PAGE analysis of recombinant Rat MIP3A/CCL20 Protein.



Rat C-C Motif Chemokine 20 / MIP3A is a recombinant Rat protein expressed in *E. coli*.

**Target:** C-C Motif Chemokine 20 / MIP3A (CCL20)

**Origin:** Rat

**Expression:** Recombinant

**Tested Applications:** WB, SDS-PAGE

**Host:** *E. coli*

**Conjugation:** Unconjugated

**Form:** Lyophilized

**Purity:** > 80%

**Reconstitution:** To keep the original salt concentration, we recommend reconstituting to the original concentration prior to lyophilization (see Concentration) in ddH<sub>2</sub>O. If a lower concentration is required, dilute in PBS, pH 7.4. If a higher concentration is required, the product can be reconstituted directly in PBS, pH 7.4, though please note that this will change the overall salt concentration. The stock concentration should be between 0.1-1.0 mg/ml. Do not vortex.

# Datasheet

Version: 2.0.0

Revision date: 27 Apr 2025



<b>Storage:</b>	Store at 2-8 °C for up to one month. Store at -80 °C for up to one year. Avoid repeated freeze/thaw cycles.
<b>UniProt Primary AC:</b>	P97884 ( <a href="#">UniProt</a> , <a href="#">ExPASy</a> )
<b>Gene Symbol:</b>	CCL20
<b>GeneID:</b>	<a href="#">29538</a>
<b>KEGG:</b>	rno:29538
<b>Ensembl:</b>	ENSRNOG00000015992
<b>String:</b>	<a href="#">10116.ENSRNOP00000021730</a>
<b>Molecular Weight:</b>	Calculated MW: 38.3 kDa Observed MW: 40 kDa
<b>Sequence Fragment:</b>	Glu24-Lys95
<b>Sequence:</b>	EAASNFD CCLTYTKNVY HHARNFVGFT TQMADEACDI NAIIFHLKSK RSVCADPKQI WVKRILHLLS LRTKK
<b>Tag:</b>	N-terminal His tag and GST tag
<b>Buffer:</b>	Prior to lyophilization: PBS, pH 7.4, containing 0.01% Sarcosyl, 5% Trehalose.
<b>Activity:</b>	Not tested
<b>Concentration:</b>	Prior to lyophilization: 600 µg/ml
<b>Note:</b>	THIS PRODUCT IS FOR RESEARCH USE ONLY. NOT FOR USE IN DIAGNOSTIC, THERAPEUTIC OR COSMETIC PROCEDURES. NOT FOR HUMAN OR ANIMAL CONSUMPTION.