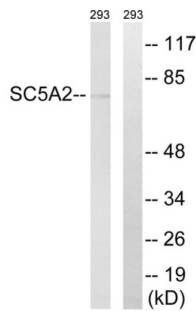


Sodium/Glucose Cotransporter 2 (SLC5A2) Antibody

Catalogue No.: abx014900



Western blot analysis of extracts from 293 cells, using Sodium/Glucose Cotransporter 2 (SLC5A2) Antibody. The right lane (+) is blocked with recombinant SLC5A2 peptide.

Rabbit polyclonal antibody against SLC5A2 protein. Immunogen region is Internal.

Target:	Sodium/Glucose Cotransporter 2 (SLC5A2)
Clonality:	Polyclonal
Reactivity:	Human, Mouse, Rat
Tested Applications:	ELISA, WB
Host:	Rabbit
Recommended dilutions:	WB: 1/500 - 1/3000, ELISA: 1/40000. Optimal dilutions/concentrations should be determined by the end user.
Conjugation:	Unconjugated
Immunogen:	The antiserum was produced against synthesized peptide derived from internal of human SLC5A2.
Isotype:	IgG
Form:	Liquid
Purification:	Purified from rabbit antiserum by affinity chromatography using epitope-specific immunogen.
Storage:	Aliquot and store at -20°C. Avoid repeated freeze/thaw cycles.
UniProt Primary AC:	P31639 (UniProt , ExPASy)
Gene Symbol:	SLC5A2
GeneID:	6524

Datasheet

Version: 4.0.0
Revision date: 22 Nov 2024



OMIM: [182381](#)

HGNC: 11037

KEGG: hsa:6524

Ensembl: ENSG00000140675

String: [9606.ENSP00000327943](#)

Buffer: PBS (without Mg²⁺ and Ca²⁺), pH 7.4, 150 mM NaCl, 0.02% sodium azide, 50% glycerol.

Concentration: 1 mg/ml

Note: This product is for research use only.

For Reference Only