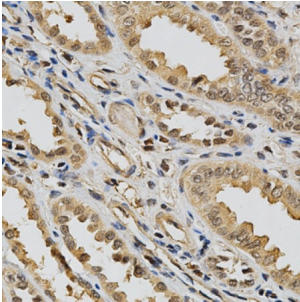
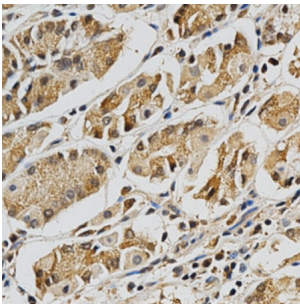


Lectin-Galactoside Binding Soluble 3 (LGALS3) Antibody

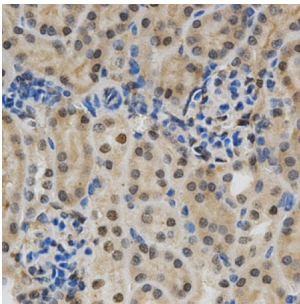
Catalogue No.: abx001250



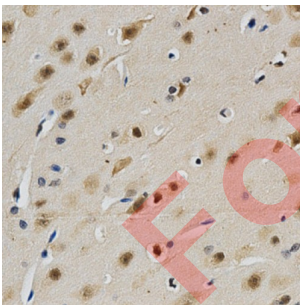
Immunohistochemistry of paraffin-embedded human kidney using LGALS3 Antibody (abx001250) at dilution of 1/200 (40x lens).



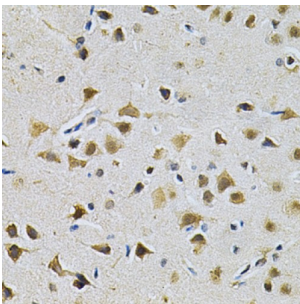
Immunohistochemistry of paraffin-embedded human stomach using LGALS3 Antibody (abx001250) at dilution of 1/200 (40x lens).



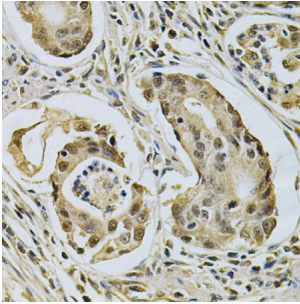
Immunohistochemistry of paraffin-embedded mouse kidney using LGALS3 Antibody (abx001250) at dilution of 1/200 (40x lens).



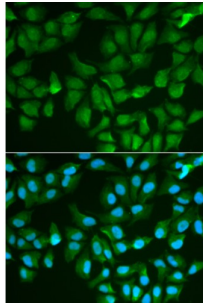
Immunohistochemistry of paraffin-embedded rat brain using LGALS3 Antibody (abx001250) at dilution of 1/200 (40x lens).



Immunohistochemistry of paraffin-embedded rat brain using LGALS3 Antibody (abx001250) at dilution of 1/200 (40x lens).



Immunohistochemistry of paraffin-embedded human gastric cancer using LGALS3 Antibody (abx001250) at dilution of 1/200 (40x lens).



Immunofluorescence analysis of MCF-7 cells using LGALS3 antibody (abx001250). Blue: DAPI for nuclear staining.

LGALS3 Antibody is a Rabbit Polyclonal antibody against LGALS3. Galectins are a family of soluble b-galactoside-binding animal lectins that modulate cell-to-cell adhesion and cell-to-extracellular matrix (ECM) interactions and play a role in tumor progression, pre-mRNA splicing and apoptosis. The galectin-3 protein, also known as Mac-2, hMac-2, GALBP, CBP35 or LGALS3, contains a single carbohydrate binding domain, which binds galactose-containing glycoconjugates. Galectin-3 is expressed in colonic and intestinal epithelium, inflammatory macrophages, papillary and follicular carcinomas, neoplastic astrocytes and some B and T lymphocytes. Upregulated expression of galectin-3 is involved in cancer progression and metastasis. Galectin-3 mediates the endocytosis of β 1 Integrins in a lactose-dependent manner and is associated with thyroid malignancy and Crohn's disease. It may also be used as a marker for diagnosing cases involving Hurthle cell adenomas and carcinomas.

Target:	Lectin-Galactoside Binding Soluble 3 (LGALS3)
Clonality:	Polyclonal
Reactivity:	Human, Mouse, Rat
Tested Applications:	WB, IF/ICC
Host:	Rabbit
Recommended dilutions:	WB: 1/100 - 1/500, IF/ICC: 1/50 - 1/200. Optimal dilutions/concentrations should be determined by the end user.
Conjugation:	Unconjugated
Immunogen:	Recombinant fusion protein containing a sequence corresponding to amino acids 1-250 of human Galectin 3/Galectin 3/LGALS3.
Isotype:	IgG

Datasheet

Version: 2.0.0
Revision date: 08 Nov 2024



Form:	Liquid
Purification:	Purified by affinity chromatography.
Storage:	Aliquot and store at -20°C. Avoid repeated freeze/thaw cycles.
UniProt Primary AC:	P17931 (UniProt , ExpASY)
Gene Symbol:	LGALS3
GeneID:	3958
NCBI Accession:	NP_002297.2
KEGG:	hsa:3958
String:	9606.ENSP00000254301
Molecular Weight:	Calculated MW: 26 kDa Observed MW: 26 kDa
Buffer:	PBS, pH 7.3, containing 0.05% Proclin-300, 50% glycerol.
Concentration:	> 0.2 mg/ml
Note:	This product is for research use only.

For Reference Only