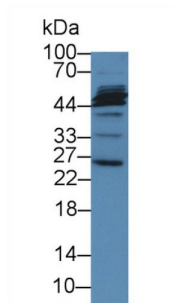
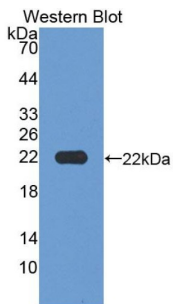


## Microfibrillar Associated Protein 2 (MFAP2) Antibody

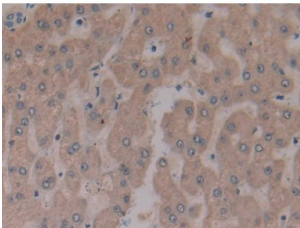
Catalogue No.: abx128849



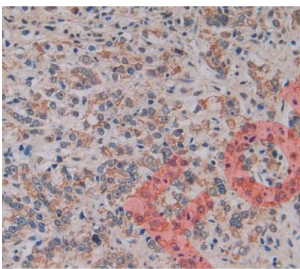
Western blot analysis of Pig Liver lysate, using Human MFAP2 Antibody (3 µg/ml) and HRP-conjugated Goat Anti-Rabbit antibody ([abx400043](#), 0.2 µg/ml).



Western blot analysis of the recombinant protein.



IHC-P analysis of Human Liver Tissue, with DAB staining.



IHC-P analysis of prostate gland cancer tissue, with DAB staining.

Microfibrillar Associated Protein 2 Antibody is a Rabbit Polyclonal against Microfibrillar Associated Protein 2.

**Target:** Microfibrillar Associated Protein 2 (MFAP2)

**Clonality:** Polyclonal

**Reactivity:** Human

# Datasheet

Version: 4.0.0  
Revision date: 13 Mar 2025



<b>Tested Applications:</b>	WB, IHC, IF/ICC
<b>Host:</b>	Rabbit
<b>Recommended dilutions:</b>	WB: 0.01-2 µg/ml, IHC: 5-20 µg/ml, IF/ICC: 5-20 µg/ml. Optimal dilutions/concentrations should be determined by the end user.
<b>Conjugation:</b>	Unconjugated
<b>Immunogen:</b>	MFAP2 (Leu6-Val162)
<b>Form:</b>	Liquid
<b>Purification:</b>	Purified by antigen-specific affinity chromatography, followed by Protein A affinity chromatography.
<b>Storage:</b>	Aliquot and store at -20°C. Avoid repeated freeze/thaw cycles.
<b>Buffer:</b>	0.01 M PBS, pH 7.4, containing 0.05% Proclin-300, 50% glycerol.
<b>Note:</b>	THIS PRODUCT IS FOR RESEARCH USE ONLY. NOT FOR USE IN DIAGNOSTIC, THERAPEUTIC OR COSMETIC PROCEDURES. NOT FOR HUMAN OR ANIMAL CONSUMPTION.

For Reference Only