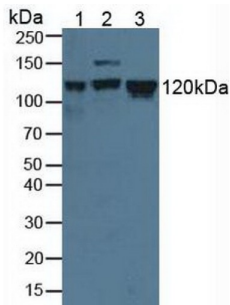
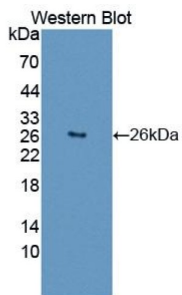


## DNA Replication Licensing Factor MCM2 (MCM2) Antibody

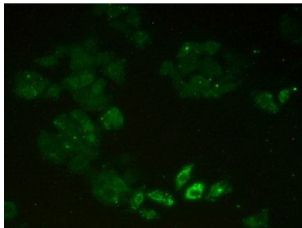
Catalogue No.: abx129081



Western blot analysis of (1) Human K562 Cells, (2) Human HeLa cells and (3) Human Jurkat Cells.



Western blot analysis of recombinant Human MCM2.



IHC-P analysis of Human HeLa cells, with FITC staining.

DNA Replication Licensing Factor MCM2 Antibody is a Rabbit Polyclonal against DNA Replication Licensing Factor MCM2.

**Target:** DNA Replication Licensing Factor MCM2 (MCM2)

**Clonality:** Polyclonal

**Reactivity:** Human

**Tested Applications:** WB, IHC, IF/ICC

**Host:** Rabbit

**Recommended dilutions:** WB: 0.01-2 µg/ml, IHC: 5-20 µg/ml, IF/ICC: 5-20 µg/ml. Optimal dilutions/concentrations should be determined by the end user.

**Conjugation:** Unconjugated

# Datasheet

Version: 2.0.0  
Revision date: 13 Mar 2025



<b>Immunogen:</b>	MCM2 (Ile473-Val679)
<b>Form:</b>	Liquid
<b>Purification:</b>	Purified by antigen-specific affinity chromatography, followed by Protein A affinity chromatography.
<b>Storage:</b>	Aliquot and store at -20°C. Avoid repeated freeze/thaw cycles.
<b>UniProt Primary AC:</b>	P49736 ( <a href="#">UniProt</a> , <a href="#">ExPASy</a> )
<b>KEGG:</b>	hsa:4171
<b>String:</b>	<a href="#">9606.ENSP00000265056</a>
<b>Buffer:</b>	0.01 M PBS, pH 7.4, containing 0.05% Proclin-300, 50% glycerol.
<b>Note:</b>	THIS PRODUCT IS FOR RESEARCH USE ONLY. NOT FOR USE IN DIAGNOSTIC, THERAPEUTIC OR COSMETIC PROCEDURES. NOT FOR HUMAN OR ANIMAL CONSUMPTION.

For Reference Only