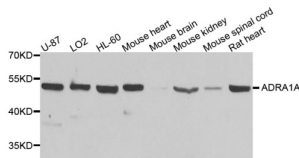


Alpha 1A Adrenergic Receptor (ADRA1A) Antibody

Catalogue No.: abx001252



Western blot analysis of extracts of various cell lines, using ADRA1A antibody (abx001252) at 1/1000 dilution.

ADRA1A Antibody is a Rabbit Polyclonal antibody against ADRA1A. ADRA1A, also named as ADRA1C, belongs to the G-protein coupled receptor 1 family. ADRA1A mediates its action by association with G proteins that activate a phosphatidylinositol-calcium second messenger system. Its effect is mediated by G(q) and G(11) proteins. The antibody is specific to ADRA1A.

Target:	Alpha 1A Adrenergic Receptor (ADRA1A)
Clonality:	Polyclonal
Reactivity:	Human, Mouse, Rat
Tested Applications:	WB, IHC, IF/ICC
Host:	Rabbit
Recommended dilutions:	WB: 1/500 - 1/2000, IHC-P: 1/50 - 1/100, IF/ICC: 1/50 - 1/200. Not tested in IHC-F. Optimal dilutions/concentrations should be determined by the end user.
Conjugation:	Unconjugated
Immunogen:	Recombinant fusion protein containing a sequence corresponding to amino acids 346-475 of human ADRA1A.
Isotype:	IgG
Form:	Liquid
Purification:	Purified by affinity chromatography.
Storage:	Aliquot and store at -20°C. Avoid repeated freeze/thaw cycles.
UniProt Primary AC:	P35348 (UniProt , ExpASY)
Gene Symbol:	ADRA1A

Datasheet

Version: 2.0.0
Revision date: 06 Oct 2024



GeneID: [148](#)

NCBI Accession: NP_150646.3

KEGG: hsa:148

String: [9606.ENSP00000369960](#)

Molecular Weight: Calculated MW: 51 kDa
Observed MW: 51 kDa

Buffer: PBS, pH 7.3, containing 0.02% sodium azide, 50% glycerol.

Concentration: > 0.2 mg/ml

Note: This product is for research use only.

For Reference Only