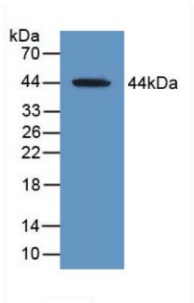
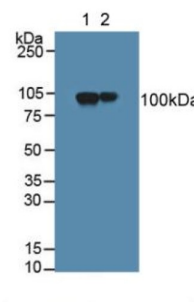


Myelin Associated Glycoprotein (MAG) Antibody

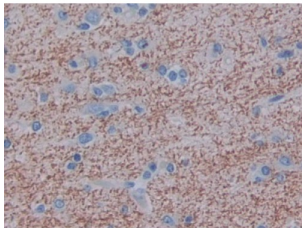
Catalogue No.: abx128701



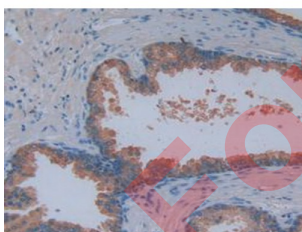
Western blot analysis of recombinant Human MAG protein.



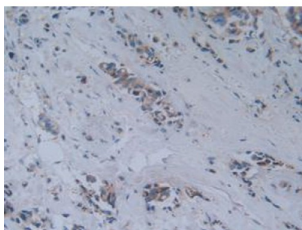
Western blot analysis of (1) Rat Brain Tissue and (2) Mouse Brain Tissue using MAG antibody.



IHC-P analysis of Human Cerebrum Tissue using MAG antibody, with DAB staining.



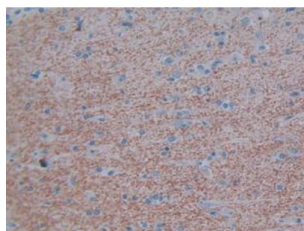
IHC-P analysis of Human Prostate Gland Tissue using MAG antibody, with DAB staining.



IHC-P analysis of Human Breast Cancer Tissue using MAG antibody, with DAB staining.

Datasheet

Version: 3.0.0
Revision date: 01 Sep 2024



IHC-P analysis of Human Brain Tissue using MAG antibody, with DAB staining.

Myelin Associated Glycoprotein Antibody is a Rabbit Polyclonal against Myelin Associated Glycoprotein.

Target:	Myelin Associated Glycoprotein (MAG)
Clonality:	Polyclonal
Reactivity:	Human
Tested Applications:	WB, IHC, IF/ICC
Host:	Rabbit
Recommended dilutions:	WB: 0.5-2 µg/ml, IHC: 5-20 µg/ml, IF/ICC: 5-20 µg/ml. Optimal dilutions/concentrations should be determined by the end user.
Conjugation:	Unconjugated
Immunogen:	abx166493 - MAG (Ser133-Lys237)
Form:	Liquid
Purification:	Purified by antigen-specific affinity chromatography, followed by Protein A affinity chromatography.
Storage:	Aliquot and store at -20°C. Avoid repeated freeze/thaw cycles.
UniProt Primary AC:	P20916 (UniProt , ExPASy)
KEGG:	hsa:4099
String:	9606.ENSP00000376048
Buffer:	0.01 M PBS, pH 7.4, containing 0.05% Proclin-300, 50% glycerol.
Specificity:	Cross-reacts with Mouse and Rat MAG.

Datasheet

Version: 3.0.0

Revision date: 01 Sep 2024



Concentration: 0.8 mg/ml

Note: This product is for research use only.

For Reference Only