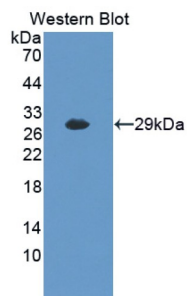
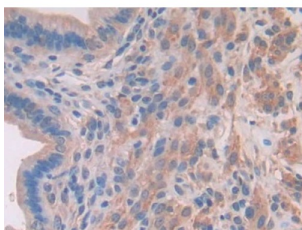


Myosin Light Chain Kinase 2 (MYLK2) Antibody

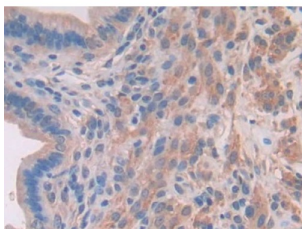
Catalogue No.: abx129421



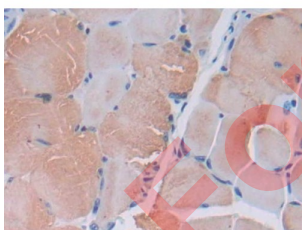
Western blot analysis of the recombinant protein.



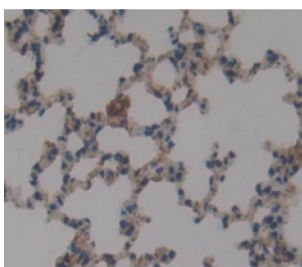
IHC-P analysis of Mouse Uterus Tissue, with DAB staining.



IHC-P analysis of Mouse Uterus Tissue, with DAB staining.



IHC-P analysis of Mouse Skeletal muscle Tissue, with DAB staining.



IHC-P analysis of Kidney tissue, with DAB staining.

Datasheet

Version: 2.0.0
Revision date: 13 Mar 2025



Myosin Light Chain Kinase 2 Antibody is a Rabbit Polyclonal against Myosin Light Chain Kinase 2.

Target:	Myosin Light Chain Kinase 2 (MYLK2)
Clonality:	Polyclonal
Reactivity:	Mouse
Tested Applications:	WB, IHC, IF/ICC
Host:	Rabbit
Recommended dilutions:	WB: 0.01-2 µg/ml, IHC: 5-20 µg/ml, IF/ICC: 5-20 µg/ml. Optimal dilutions/concentrations should be determined by the end user.
Conjugation:	Unconjugated
Immunogen:	MYLK2 (Ala330-Ala548)
Form:	Liquid
Purification:	Purified by antigen-specific affinity chromatography, followed by Protein A affinity chromatography.
Storage:	Aliquot and store at -20°C. Avoid repeated freeze/thaw cycles.
Buffer:	0.01 M PBS, pH 7.4, containing 0.05% Proclin-300, 50% glycerol.
Concentration:	1 mg/ml
Note:	THIS PRODUCT IS FOR RESEARCH USE ONLY. NOT FOR USE IN DIAGNOSTIC, THERAPEUTIC OR COSMETIC PROCEDURES. NOT FOR HUMAN OR ANIMAL CONSUMPTION.